

SPECIAL ORDER



CUSTOM UNIFORM CONFIGURATOR

NOW AVAILABLE AT
www.russellathletic.com



**Create your own
customized uniform:**

- Personalized team name
- Custom colors
- Realistic images
- Fill your personal "Locker Room" with a uniform for each sport



PRODUCT



ADULT XTREME COMPRESSION GAME JERSEY

S46XCCC - XC Cloth	\$125.00
C46XCCC - XC Cloth (Cap Sleeve)	\$130.00
S46SMCC - SM Cloth	\$115.00
C46SMCC - SM Cloth	\$120.00
S4693CC - 93 Cloth	\$100.00
C4693CC - 93 Cloth	\$105.00

Sizes: M-XXL Oversize: 3XL-5XL

- Full length jersey (XC, SM or 93 Cloth)
- Double ply curved yoke (XC or 73 Cloth)
- 7" Skill sleeves including cuffs (XC or 73 Cloth)
- 1" Mitered V-neck (XP or 62 Cloth)
- 1" Cuffs with elastic (XP or 62 Cloth)
- Nylon/spandex side panels, (XP or 62 Cloth)
- Shoulder piping (XP or 73 Cloth)
- Front yoke insert and front and back sleeve inserts (XP, SM or 73 Cloth)
- Underarm and front lower sleeve inserts (SM or 93 Cloth)

- | | |
|--|------------------------------|
| Step 1 – Body, yoke and sleeve | Step 5 – Piping |
| Step 2 – Front yoke insert | Step 6 – Front sleeve insert |
| Step 3 – Front and back sleeve inserts | Step 7 – Underarm inserts |
| Step 4 – Neck and cuffs | Step 8 – Side panels |

Body Options:	
Belt length	N/C
Nameplates	\$8.00
I.D. Tags	\$4.00
+ 2" Body length	\$5.00
+ 4" Body length	\$7.00
+ 6" Body length	\$9.00
Sleeve Options:	
Hemmed sleeves	N/C
Hemmed sleeves with elastic	N/C
Neck Options:	
1" Mitered rib knit V-neck	N/C
1" V-bib	\$5.00
Cuff Options:	
1" Rib knit cuffs with elastic	N/C
1 1/2" Rib knit cuffs with elastic	N/C

Decoration Type: Screen Print/Embroidery/Twill
--

Decoration Placements: 1, 2A, 2B, 3, 6, 7, 7X, 9C, 9X, 32, 35, BN, SV, YL

NOTES: Stock style: Adult S46XCMK, Youth NA Blitz Concept style: Adult S46XCMM Special Order style: Youth S46AHYC 10% Up charge for 3XL - 20% Up charge for 4XL-5XL
--

S46XCCC as Decorated: \$143.00

S46XCCC Construction & Decoration as pictured:

- Team Name: 1/C Embroidery (PL #9C), Full Block
- Numbers: 2/C Russcote (PL# 6, 7), Full Block

OPTIONS



*As decorated pricing based on 48 units, does not include set-up charges.

10% UPCHARGE FOR 3XL, 20% UPCHARGE FOR 4XL, 5XL

Visit us Online: <https://portal.russellathletic.com> or fax orders to: 1.888.259.6557



PRODUCT



ADULT XTREME COMPRESSION GAME JERSEY

S47XCCC - XC Cloth	\$125.00
C47XCCC - XC Cloth (Cap Sleeve)	\$130.00
S47SMCC - SM Cloth	\$115.00
C47SMCC - SM Cloth	\$120.00
S4793CC - 93 Cloth	\$100.00
C4793CC - 93 Cloth	\$105.00

Sizes: M-XXL Oversize: 3XL-5XL

- Full length jersey (XC, SM or 93 Cloth)
- Double ply curved yoke (XC or 73 Cloth)
- 7" Skill sleeves including cuffs (XC or 73 Cloth)
- 1" Mitered V-neck (XP or 62 Cloth)
- 1" Cuffs with elastic (XP or 62 Cloth)
- 1/4" piping on neck (XP or 62 Cloth)
- 1/8" side seam piping (XP or 62 Cloth)
- Front side inserts (SM or 93 Cloth)
- Upper back inserts (SM or 93 Cloth)

- | | |
|----------------------|--|
| Step 1 – Body | Step 5 - Neck |
| Step 2 – Yoke | Step 6 – Cuffs |
| Step 3 – Sleeve | Step 7 – Front side & upper back inserts |
| Step 4 – Neck piping | Step 8 – Side seam piping |

Body Options:	
Belt length	N/C
Nameplates	\$8.00
I.D. Tags	\$4.00
+ 2" Body length	\$5.00
+ 4" Body length	\$7.00
+ 6" Body length	\$9.00
Sleeve Options:	
Hemmed sleeves	N/C
Hemmed sleeves with elastic	N/C
Neck Options:	
1" Mitered rib knit V-neck	N/C
1" V-bib	\$5.00
Cuff Options:	
1" Rib knit cuffs with elastic	N/C
1 1/2" Rib knit cuffs with elastic	N/C
1/4" piping bordering sleeve and cuffs	\$5.00

Decoration Type:
Screen Print/Embroidery/Twill

Decoration Placements:
1, 2A, 2B, 3, 66, 7, 7X, 9C, 9X, 32, 35, BN, SV, YL

NOTES:
Special Order style with sublimated sleeves: S47XCSU/C47XCSU
10% Up charge for 3XL - 20% Up charge for 4XL-5XL

S47XCCC as Decorated: \$141.50

S47XCCC Construction & Decoration as pictured:

- Team Logo: 2/C Russcote (PL#9C)
- Numbers: 2/C Russcote (PL# 6, 7), Full Block

OPTIONS



BACK

FRONT



*As decorated pricing based on 48 units, does not include set-up charges.

10% UPCHARGE FOR 3XL, 20% UPCHARGE FOR 4XL, 5XL Team names, logos and colors are for demonstration purposes only and are not intended to suggest any affiliation with Russell Brands, LLC.

PRODUCT



ADULT COLOR BLOCK GAME JERSEY

S40XCCC - XC Cloth	\$125.00
C40XCCC - XC Cloth (Cap Sleeve)	\$130.00
S40SMCC - SM Cloth	\$115.00
C40SMCC - SM Cloth (Cap Sleeve)	\$120.00
S4093CC - 93 Cloth	\$100.00
C4093CC - 93 Cloth (Cap Sleeve)	\$105.00

Sizes: M-XXL Oversize: 3XL-5XL

- Full length jersey (XC, SM or 93 Cloth)
- Double ply curved yoke (XC or 73 Cloth)
- 7" Skill/Cap sleeves including cuffs, upper & center sleeve (XC or 73 Cloth)
- Lower sleeve (XP or 62 Cloth)
- Nylon/spandex side/under sleeve panels (XP or 62 Cloth)
- 1/8" piping bordering sleeve inserts & side/under sleeve panels (XP or 73 Cloth)
- 1" Two piece mitered v-neck with bar tack (XP or 62 Cloth)
- 1" Cuffs with elastic (XP or 62 Cloth)

- Step 1 - Body, yoke, upper front neck
- Step 2 - Upper sleeve
- Step 3 - Center sleeve
- Step 4 - Lower sleeve
- Step 5 - Side/under sleeve panels
- Step 6 - Piping
- Step 7 - Lower front & back neck, cuffs

Body Options:	
Belt length	N/C
Nameplates	\$8.00
I.D. Tags-	\$4.00
+ 2" Body length	\$5.00
+ 4" Body length	\$7.00
+ 6" Body length	\$9.00
Sleeve Options:	
Hemmed sleeves (S40's only)	N/C
Hemmed sleeves with elastic	N/C

Decoration Type:
Screen Print/Embroidery/Twill

Decoration Placements:
1 (no numbers), 2A, 2B, 3, 6, 7, 7X, 9C, 9X, YL

NOTES:
10% Up charge for 3XL - 20% Up charge for 4XL-5XL

OPTIONS



S40XCCC as Decorated: \$148.50

S40XCCC Construction & Decoration as pictured:

- Team Name: 2/C Russcote (PL# 7), Full Block
- Numbers: 2/C Russcote (PL# 6, 7), Full Block
- Sleeve Logo: 1/C Russcote (PL# 1), Full Block

*Patches not included in pricing

PRODUCT



ADULT COLOR BLOCK GAME JERSEY

S41XCCC - XC Cloth	\$125.00
C41XCCC - XC Cloth (Cap Sleeve)	\$130.00
S41SMCC - SM Cloth	\$115.00
C41SMCC - SM Cloth (Cap Sleeve)	\$120.00
S4193CC - 93 Cloth	\$100.00
C4193CC - 93 Cloth (Cap Sleeve)	\$105.00

Sizes: M-XXL Oversize: 3XL-5XL

- Full length jersey (XC, SM or 93 Cloth)
- Double ply curved yoke (XC or 73 Cloth)
- 7" Skill/Cap sleeves hemmed with elastic, upper sleeve (XC or 73 Cloth)
- Middle sleeve inserts and lower sleeve (XP or 62 Cloth)
- Nylon/spandex side inserts (XP or 62 Cloth)
- 1/2" Applied stripes (XP or 62 Cloth)
- 1" Two piece mitered V-neck with bar tack (XP or 62 Cloth)

- Step 1 - Body, yoke, upper front neck
- Step 2 - Upper sleeve
- Step 3 - Lower sleeve
- Step 4 - Side inserts
- Step 5 - Applied stripe, middle sleeve inserts
- Step 6 - Lower front & back neck

Body Options:	
Belt length	N/C
Nameplates	\$8.00
I.D. Tags	\$4.00
+ 2" Body length	\$5.00
+ 4" Body length	\$7.00
+ 6" Body length	\$9.00
Sleeve Options:	
Hemmed sleeves (S41's only)	N/C

Decoration Type:
Screen Print/Embroidery/Twill

Decoration Placements:
1, 2A, 2B, 3, 6, 7, 9C, 32, 35, SV, YL, BN

NOTES:
Stock style: Adult S41SMMK
Blitz Concept style: Adult S41XCMM, Youth not available
Special Order style: Youth S41AHYC
10% Up charge for 3XL - 20% Up charge for 4XL-5XL

OPTIONS



S41XCCC as Decorated: \$196.00

S41XCCC Construction & Decoration as pictured:

- Team Logo: 1/C Embroidery (PL#9C)
- Numbers: 2/C Twill (PL# 2A, 6, 7), Full Block

* Patches not included in pricing

PRODUCT



ADULT COLOR BLOCK GAME JERSEY

S42XCCC - XC Cloth	\$125.00
C42XCCC - XC Cloth (Cap Sleeve)	\$130.00
S42SMCC - SM Cloth	\$115.00
C42SMCC - SM Cloth (Cap Sleeve)	\$120.00
S4293CC - 93 Cloth	\$100.00
C4293CC - 93 Cloth (Cap Sleeve)	\$105.00

Sizes: M-XXL Oversize: 3XL-5XL

- Full length jersey (XC, SM or 93 Cloth)
- Double ply curved yoke (XC or 73 Cloth)
- 7" Skill/Cap sleeves including cuffs (XC or 73 Cloth)
- Yoke inserts (XC or 73 Cloth)
- Nylon/spandex side/under sleeve panels (XP or 62 Cloth)
- 1/2" Applied stripes (XP or 62 Cloth)
- 1" Two piece mitered V-neck with bar tack (XP or 62 Cloth)
- 1" Cuffs with elastic (XP or 62 Cloth)

- Step 1 - Body, yoke, lower yoke, sleeve, upper front neck
- Step 2 - Yoke inserts
- Step 3 - Side/under sleeve panels
- Step 4 - Applied stripes
- Step 5 - Lower front & back neck, cuffs

Body Options:

Belt length	N/C
Nameplates	\$8.00
I.D. Tags	\$4.00
+ 2" Body length	\$5.00
+ 4" Body length	\$7.00
+ 6" Body length	\$9.00

Sleeve Options:

Hemmed sleeves (S42's only)	N/C
Hemmed sleeves with elastic	N/C

Decoration Type:

Screen Print/Embroidery/Twill

Decoration Placements:

1, 2A, 2B, 3, 6, 7, 9C, 9X, 7X, 32, 35, SV, YL, BN

NOTES:

Stock style: Adult S4293MK, Youth S42AHWK
 Blitz Concept style: Adult S4293MM
 Special Order style: Youth S42AHYC
 10% Up charge for 3XL - 20% Up charge for 4XL-5XL

OPTIONS



S42XCCC as Decorated: \$153.50

S42XCCC Construction & Decoration as pictured:

- Team Name: 2/C Russcote (PL# 7), Custom Design
- Numbers: 2/C Russcote (PL# 6, 7), Athletic Shadow
- Sleeves: 2/C Russcote (PL# 1), Athletic Shadow

NOTE: *Shown with hemmed sleeves with elastic option

PRODUCT



ADULT GAME JERSEY

S89XCCC - XC Cloth	\$125.00
C89XCCC - XC Cloth (Cap Sleeve)	\$130.00
S89SMCC - SM Cloth	\$95.00
C89SMCC - SM Cloth (Cap Sleeve)	\$100.00
S8993CC - 93 Cloth	\$80.00
C8993CC - 93 Cloth (Cap Sleeve)	\$85.00

Sizes: M-XXL Oversize: 3XL-5XL

- Full length jersey (XC, SM or 93 Cloth)
- Double ply yoke (XC or 73 Cloth)
- 7" Skill/Cap sleeves including cuffs (XC or 73 Cloth)
- Nylon/spandex side/under sleeve panels (XP or 62 Cloth)
- 1" Mitered V-neck (XP or 62 Cloth)
- 1" Cuffs with elastic (XP or 62 Cloth)

- Step 1 - Body
- Step 2 - Yoke
- Step 3 - Sleeves
- Step 4 - Side/under sleeve panels
- Step 5 - Neck
- Step 6 - Cuffs

Body Options:	
Belt length	N/C
Nameplates	\$8.00
I.D. Tags	\$4.00
+ 2" Body length	\$5.00
+ 4" Body length	\$7.00
+ 6" Body length	\$9.00
Sleeve Options:	
Hemmed sleeves (S89's only)	N/C
Hemmed sleeves with elastic	N/C
Neck Options:	
1" Mitered rib knit V-neck	N/C
1" V-bib	\$5.00
Cuff Options:	
1" Rib knit cuffs with elastic	N/C
1 1/2" Rib knit cuffs with elastic	N/C
Piping Options:	
Piping bordering side/under sleeve panels	\$8.00

Decoration Type:
Screen Print/Embroidery/Twill

Decoration Placements:
1, 2A, 2B, 3, 6, 7, 7X, 9C, 9X, 32, 35, BN, SV, YL

NOTES:
Stock style: Adult S8693MK, Youth S86AHWK
(Stock style has hemmed sleeve with elastic)
Blitz Concept style: Adult S89SMMM
Special Order style: Youth S89AHYC
10% Up charge for 3XL - 20% Up charge for 4XL-5XL

S89XCCC as Decorated: \$150.30

S89XCCC Construction & Decoration as pictured:

- Team Logo: 2/C Russcote, Custom Font
- Numbers: 1/C Russcote (PL# 2A, 6, 7), Full Block
- Sleeve Stripes: 2/C Russcote (PL# SV), Stripe #1

* Patches not included in pricing

OPTIONS



*As decorated pricing based on 48 units, does not include set-up charges.

PRODUCT



ADULT XTREME COMPRESSION GAME JERSEY

S39XCCC - XC Cloth \$125.00
 C39XCCC - XC Cloth (Cap Sleeve) \$130.00

Sizes: M-XXL Oversize: 3XL-5XL

- Full length jersey (XC Cloth)
- Double ply yoke (XC Cloth)
- 7" Skill/Cap sleeves including cuffs (XC Cloth)
- Nylon/spandex side/under sleeve panels (XP Cloth)
- 1" Mitered V-neck (XP Cloth)
- 1" Cuffs with elastic (XP Cloth)
- Shoulder inserts (XC Cloth)
- 1/4" Piping (XP Cloth)

- Step 1 - Body
- Step 2 - Yoke
- Step 3 - Sleeves
- Step 4 - Side/under sleeve panels
- Step 5 - Neck
- Step 6 - Cuffs
- Step 7 - Shoulder inserts
- Step 8 - Piping

Body Options:	
Belt length	N/C
Nameplates	\$8.00
I.D. Tags-	\$4.00
+ 2" Body length	\$5.00
+ 4" Body length	\$7.00
+ 6" Body length	\$9.00
Sleeve Options:	
Hemmed sleeves (S39's only)	N/C
Hemmed sleeves with elastic	N/C
Neck Options:	
1" Mitered rib knit V-neck	N/C
1" V-bib	\$5.00
Cuff Options:	
1" Rib knit cuffs with elastic	N/C
1 1/2" Rib knit cuffs with elastic	N/C
Piping Options:	
Piping bordering side/under sleeve panels	\$8.00

Decoration Type:
 Screen Print/Embroidery/Twill

Decoration Placements:
 1 (No numbers, logo only), 2A, 2B, 66, 7, 9C, 32, 35, SV, YL

NOTES:
 10% Up charge for 3XL - 20% Up charge for 4XL-5XL

S39XCCC as Decorated: \$155.00

S39XCCC Construction & Decoration as pictured:

- Team Name: 1/C Embroidery (PL# 9C), Full Block
- Numbers: 2/C Russcote (PL# 2A, 6, 7), Viper

OPTIONS



PRODUCT

NEW



ADULT XTREME COMPRESSION GAME JERSEY

S25XCCC - XC Cloth \$125.00
C25XCCC - XC Cloth (Cap Sleeve) \$130.00

Sizes: M-XXL Oversize: 3XL-5XL

- Full length jersey (XC Cloth)
- Double ply yoke (XC Cloth)
- 7" Skill/Cap sleeves including cuffs (XC Cloth) upper sleeve (XC Cloth) lower sleeve
- 1" Mitered V-neck (XP Cloth)
- 1" Cuffs with elastic (XC Cloth)
- 1/8" Piping bordering front and back yoke to sleeve ends (XP Cloth)

- Step 1 – Body
- Step 2 – Yoke
- Step 3 – Upper sleeves
- Step 4 – Lower sleeves
- Step 5 – Neck
- Step 6 – Cuffs
- Step 7 – Piping

Body Options:	
Belt length-	N/C
Nameplates-	\$8.00
I.D. Tags-	\$4.00
+ 2" Body length -	\$5.00
+ 4" Body length -	\$7.00
+ 6" Body length-	\$9.00
Piping Options:	
Piping on side seams-	\$8.00

Decoration Type:
 Screen Print/Embroidery/Twill

Decoration Placements:
 1, 2A (3" numbers only), 2B, 3, 66, 7, 7X, 9C, 9N, 9X, 32, 35, BN, YL

NOTES:
 10% Up charge for 3XL - 20% Up charge for 4XL-5XL

OPTIONS



S25XCCC as Decorated: \$162.50

S25XCCC Construction & Decoration as pictured:

- Team Name: 2/C Russcote (PL# 9C), Custom Logo
- Numbers: 2/C Russcote (PL# 2A, 6, 7), Full Block
- Sleeves: 2/C Russcote (PL# 1), Custom Logo



*As decorated pricing based on 48 units, does not include set-up charges..

10% UPCHARGE FOR 3XL, 20% UPCHARGE FOR 4XL, 5XL Team names, logos and colors are for demonstration purposes only and are not intended to suggest any affiliation with Russell Brands, LLC.

PRODUCT



**ADULT XTREME COMPRESSION
GAME JERSEY**

S22XCCC - XC Cloth \$125.00
C22XCCC - XC Cloth (Cap Sleeve) \$130.00

Sizes: M-XXL Oversize: 3XL-5XL

- Full length jersey (XC Cloth)
- Double ply yoke (XC Cloth)
- 7" Skill/Cap sleeves including cuffs (XC Cloth)
- Double ply shoulder inserts (SM Cloth)
- 1" Mitered self-material V-neck (XC Cloth)
- 1" Cuffs with elastic (SM Cloth)
- 1/8" Piping bordering shoulder inserts (XP Cloth)

Step 1 – Body, yoke, sleeves and neck
 Step 2 – Cuffs
 Step 3 – Inserts
 Step 4 – Piping

Body Options:	
Belt length	N/C
Nameplates	\$8.00
I.D. Tags	\$4.00
+ 2" Body length	\$5.00
+ 4" Body length	\$7.00
+ 6" Body length	\$9.00

Decoration Type:
Screen Print/Embroidery/Twill

Decoration Placements:
1 (3" numbers, logo only), 2A (Logo only), 2B, 3, 6, 7, 7X, 9C, 9X, BN, YL

NOTES:
10% Up charge for 3XL - 20% Up charge for 4XL-5XL

OPTIONS



S22XCCC as Decorated: \$174.50

S22XCCC Construction & Decoration as pictured:

- Team Name: 2/C Embroidery (PL# 7), Custom Design
- Numbers: 2/C Twill (PL# 6, 7), Custom Font

*Patches not included in pricing

PRODUCT



**ADULT XTREME COMPRESSION
GAME JERSEY**

S26XCCC - XC Cloth	\$125.00
C26XCCC - XC Cloth (Cap Sleeve)	\$130.00

Sizes: M-XXL Oversize: 3XL-5XL

- Full length jersey (XC Cloth)
- Double ply yoke (XC Cloth)
- 7" Skill/Cap sleeves including cuffs (XC Cloth)
- Sleeve inserts (XP Cloth)
- 1" Mitered V-neck (XP Cloth)
- 1" Cuffs (XP Cloth)
- 1/8" Piping bordering sleeve inserts and cuffs (XP Cloth)

- Step 1 - Body
- Step 2 - Yoke
- Step 3 - Sleeves
- Step 4 - Neck
- Step 5 - Cuffs
- Step 6 - Sleeve inserts
- Step 7 - Piping

Body Options:	
Belt length	N/C
I.D. Tags	\$4.00
+ 2" Body length	\$5.00
+ 4" Body length	\$7.00
+ 6" Body length	\$9.00
Piping Options:	
Piping on side seams	\$8.00

Decoration Type:
Screen Print/Embroidery/Twill

Decoration Placements:
2A, 2B, 66, 7, 7X, 9C, 9X, 9N, BN, YL, YQ, YU

NOTES:
10% Up charge for 3XL - 20% Up charge for 4XL-5XL

OPTIONS



S26XCCC as Decorated: \$153.50

S26XCCC Construction & Decoration as pictured:

- Team Name: 2/C Russcote (PL# 9C), Monolith
- Numbers: 2/C Russcote (PL# 2A, 6, 7), Monolith



*As decorated pricing based on 48 units, does not include set-up charges.

10% UPCHARGE FOR 3XL, 20% UPCHARGE FOR 4XL, 5XL Team names, logos and colors are for demonstration purposes only and are not intended to suggest any affiliation with Russell Brands, LLC.

PRODUCT



ADULT GAME JERSEY WITH SHOULDER INSERTS

S55XCCC - XC Cloth	\$125.00
C55XCCC - XC Cloth (Cap Sleeve)	\$130.00
S55SMCC - SM Cloth	\$115.00
C55SMCC - SM Cloth (Cap Sleeve)	\$120.00
S5593CC - 93 Cloth	\$100.00
C5593CC - 93 Cloth (Cap Sleeve)	\$105.00

Sizes: M-XXL Oversize: 3XL-5XL

- Full length jersey (XC, SM or 93 Cloth)
- Double ply yoke (XC or 73 Cloth)
- 7" Skill/Cap sleeves including cuffs (XC or 73 Cloth)
- Nylon/Spandex side/under sleeve panels (XP or 62 Cloth)
- 1" Mitered V-neck (62 Cloth)
- 1" Cuff with elastic (62 Cloth)
- 3" Rib knit shoulder inserts

- Step 1 – Body & yoke
- Step 2 - Sleeves
- Step 3 – Side/under sleeve panels
- Step 4 – Neck & cuffs
- Step 5 – Shoulder inserts

Body Options:	
Belt length	N/C
Nameplates	\$8.00
I.D. Tags	\$4.00
+ 2" Body length	\$5.00
+ 4" Body length	\$7.00
+ 6" Body length	\$9.00
Shoulder Insert Options:	
3" Shoulder inserts of yoke fabric	N/C
Sleeve Options:	
Hemmed sleeves (S55's only)	N/C
Hemmed sleeves with elastic	N/C
Neck Options:	
1" Mitered rib knit V-neck	N/C
1" V-bib	\$5.00
Cuff Options:	
1" Rib knit cuffs with elastic	N/C
1 1/2" Rib knit cuffs with elastic	N/C
Piping Options:	
Piping bordering side/under sleeve panels	\$8.00
Piping bordering shoulder inserts	\$8.00

OPTIONS



Decoration Type:
Screen Print/Embroidery/Twill

Decoration Placements:
1, 2A (3" numbers only), 2B, 6, 7, 9C, 9V (V-bib only), 32, 35, SV, YL

NOTES:
10% Up charge for 3XL - 20% Up charge for 4XL-5XL

S55XCCC as Decorated: \$179.60

S55XCCC Construction & Decoration as pictured:

- Team Logo: Custom Embroidery (PL# 9V)
- Numbers: 1/C Twill (PL# 1, 6, 7), Full Block

PRODUCT



ADULT GAME JERSEY

S45SMCC - SM Cloth	\$115.00
C45SMCC - SM Cloth (Cap Sleeve)	\$120.00
S4593CC - 93 Cloth	\$95.00
C4593CC - 93 Cloth (Cap Sleeve)	\$100.00

Sizes: M-XXL Oversize: 3XL-5XL

- Full length jersey (SM or 93 Cloth)
- Double ply yoke (73 Cloth)
- 7" Sleeves/Cap sleeves including cuffs (73 Cloth)
- Shoulder inserts (73 Cloth)
- Nylon/Spandex side/under sleeve panels (62 Cloth)
- 1" Mitered v-neck (62 Cloth)
- 1" Cuffs with elastic (62 Cloth)

- Step 1 – Body
- Step 2 – Yoke
- Step 3 – Shoulder inserts
- Step 4 – Sleeves
- Step 5 – Side/under sleeve panels
- Step 6 – Neck
- Step 7 – Cuffs

Body Options:	
Belt length-	N/C
Nameplates-	\$8.00
I.D. Tags-	\$4.00
+ 2" Body length -	\$5.00
+ 4" Body length -	\$7.00
+ 6" Body length -	\$9.00
Sleeve Options:	
Hemmed sleeves (S45's only)-	N/C
Hemmed sleeves w/elastic-	N/C
Neck Options:	
1" Mitered rib knit v-neck-	N/C
1" V-bib-	\$5.00
Cuff Options:	
1" Rib knit cuffs w/elastic-	N/C
1 1/2" Rib knit cuffs w/elastic-	N/C
Piping Options:	
Piping bordering side/under sleeve panels	\$8.00
Piping bordering shoulder inserts	\$8.00

Decoration Type:
Screen print/Embroidery/Twill

Decoration Placements:
1, 3, 66, 7, 7X, 9C, 9V (V-bib only), 9X, 32, 35, BN, SV, YL

NOTES:
Special Order styles: Youth S45AHYC
10% Up charge for 3XL - 20% Up charge for 4XL-5XL

S4593CC as Decorated: \$122.50

S4593CC Construction & Decoration as pictured:

- Team Name: 1/C Russcote (PL# 7) Times Bold
- Numbers: 2/C Russcote (PL# 1, 6, 7), Pro Block

OPTIONS



*As decorated pricing based on 48 units, does not include set-up charges.



10% UPCHARGE FOR 3XL, 20% UPCHARGE FOR 4XL, 5XL Team names, logos and colors are for demonstration purposes only and are not intended to suggest any affiliation with Russell Brands, LLC.



ADULT GAME JERSEY

F10SMCC - SM Cloth	\$115.00
C10SMCC - SM Cloth (Cap Sleeve)	\$120.00
F1093CC - 93 Cloth	\$95.00
C1093CC - 93 Cloth (Cap Sleeve)	\$100.00

Sizes: M-XXL Oversize: 3XL-5XL

- Full length jersey (SM or 93 Cloth)
- Double ply yoke (73 Cloth)
- 7" Sleeves/Cap sleeves including cuffs (73 Cloth)
- Nylon/Spandex curved front, back and side/under sleeve panels (62 Cloth)
- 1" Mitered v-neck (62 Cloth)
- 1" Cuffs with elastic (62 Cloth)

- Step 1 – Body
- Step 2 – Yoke
- Step 3 – Sleeves
- Step 4 – Curved front, back and side/under sleeve panels
- Step 5 – Neck
- Step 6 – Cuffs

Body Options:	
Belt length-	N/C
Nameplates-	\$8.00
I.D. Tags-	\$4.00
+ 2" Body length -	\$5.00
+ 4" Body length -	\$7.00
+ 6" Body length -	\$9.00
Sleeve Options:	
Hemmed sleeves (F10's only)-	N/C
Hemmed sleeves w/elastic-	N/C
Neck Options:	
1" Mitered rib knit v-neck-	N/C
1" V-bib-	\$5.00
Cuff Options:	
1" Rib knit cuffs w/elastic-	N/C
1 1/2" Rib knit cuffs w/elastic-	N/C
Piping Options:	
Piping bordering curved front, back and side/under sleeve panels	\$8.00
Piping front and back yoke sleeve end to sleeve end	\$8.00

Decoration Type:
Screen print/Embroidery/Twill

Decoration Placements:
1, 2A, 2B, 3, 6, 7, 7X, 9C, 9V (V-bib only), 9X, 32, 35, BN, SV, YL

NOTES:
Special Order styles: Youth S43AHYC
10% Up charge for 3XL - 20% Up charge for 4XL-5XL

OPTIONS



C10SMCC as Decorated: \$159.50

C10SMCC Construction & Decoration as pictured:

- Team Name: 2/C Russcote(PL# 7), Times Bold
- Team Logo: 2/C Embroidery (PL# 9V), Custom Logo
- Numbers: 2/C Russcote (PL# 2A, 6, 7), Full Block

*Patches not included in pricing



PRODUCT



ADULT PANELED GAME JERSEY

F17SMCC - SM Cloth	\$115.00
C17SMCC - SM Cloth (Cap Sleeve)	\$120.00
F1793CC - 93 Cloth	\$100.00
C1793CC - 93 Cloth (Cap Sleeve)	\$105.00

Sizes: M-XXL Oversize: 3XL-5XL

- Full length jersey (SM or 93 Cloth)
- 7" Double ply raglan sleeves/Cap sleeves single ply including cuffs (73 Cloth)
- Nylon/Spandex side/under sleeve panels (62 Cloth)
- 1" Tapered V-neck (62 Cloth)
- 1" Cuffs with elastic (62 Cloth)
- 1/8" Piping bordering front, back panels and raglan sleeves (73 Cloth)

- Step 1 – Body
- Step 2 – Raglan sleeves/Yoke & Cap sleeves
- Step 3 – Side/under sleeve panels
- Step 4 – Neck and cuffs
- Step 5 – Piping

Body Options:

Belt length	N/C
Nameplates	\$8.00
I.D. Tags	\$4.00
+ 2" Body length	\$5.00
+ 4" Body length	\$7.00
+ 6" Body length	\$9.00

Sleeve Options:

Hemmed sleeves (F17's only)	N/C
Hemmed sleeves with elastic	N/C

Cuff Options:

1" Rib knit cuffs with elastic	N/C
1 1/2" Rib knit cuffs with elastic	N/C

Decoration Type:

Screen Print/Embroidery/Twill

Decoration Placements:

1, 2A (3" numbers only), 2B, 66, 7, 7X, 9C, 9X, 32, 35, SV, YL

NOTES:

10% Up charge for 3XL - 20% Up charge for 4XL-5XL

OPTIONS



F1793CC as Decorated: \$130.00

F1793CC Construction & Decoration as pictured:

- Team Name: 1/C Embroidery (PL# 9C)
- Numbers: 2/c Russcote (PL# 1, 6, 7), Pro Block



*As decorated pricing based on 48 units, does not include set-up charges.

10% UPCHARGE FOR 3XL, 20% UPCHARGE FOR 4XL, 5XL Team names, logos and colors are for demonstration purposes only and are not intended to suggest any affiliation with Russell Brands, LLC.

PRODUCT



ADULT GAME JERSEY

S9593CC - 93 Cloth

\$75.00

Sizes: M-XXL Oversize: 3XL-5XL

- Full length jersey (93 Cloth)
- Double ply yoke (93 Cloth)
- 7" sleeves including cuffs (93 Cloth)
- 1" Mitered V-neck (62 Cloth)
- 1" Cuffs with elastic (62 Cloth)

- Step 1 – Body
- Step 2 – Yoke
- Step 3 – Sleeves
- Step 4 – Neck
- Step 5 – Cuffs

Body Options:

Belt length	N/C
Nameplates	\$8.00
I.D. Tags	\$4.00
+ 2" Body length	\$5.00
+ 4" Body length	\$7.00
+ 6" Body length	\$9.00

Sleeve Options:

Hemmed sleeves-	N/C
Hemmed sleeves with elastic	N/C

Neck Options:

1" Mitered rib knit V-neck	N/C
1" V-bib	\$5.00

Cuff Options:

1" Rib knit cuffs with elastic	N/C
1 1/2" Rib knit cuffs with elastic	N/C

Piping Options:

Piping on side seams	\$8.00
----------------------	--------

Decoration Type:

Screen Print/Embroidery/Twill

Decoration Placements:

1, 2A, 2B, 3, 6, 7, 9C, 9V (V-bib only), 32, 35, SV, YL

NOTES:

Stock style: Adult S9593MK, Youth S95AHWK
 Special Order styles: Youth NA
 10% Up charge for 3XL - 20% Up charge for 4XL-5XL

OPTIONS



S9593CC as Decorated: \$93.00

S9593CC Construction & Decoration as pictured:

- Numbers: 2/C Russcote (PL# 2A, 6, 7), Full Block

PRODUCT



ADULT GAME JERSEY

S9393CC - 93 Cloth

\$70.00

Sizes: M-XXL Oversize: 3XL-5XL

- Full length jersey (93 Cloth)
- Double ply yoke (73 Cloth)
- 7" sleeves including cuffs (73 Cloth)
- 1" Mitered V-neck (62 Cloth)
- 1" Cuffs with elastic (62 Cloth)

- Step 1 - Body
- Step 2 - Yoke
- Step 3 - Sleeves
- Step 4 - Neck
- Step 5 - Cuffs

Body Options:

Belt length	N/C
Nameplates	\$8.00
I.D. Tags	\$4.00
+ 2" Body length	\$5.00
+ 4" Body length	\$7.00
+ 6" Body length	\$9.00

Sleeve Options:

Hemmed sleeves	N/C
Hemmed sleeves with elastic	N/C

Neck Options:

1" Mitered rib knit V-neck	N/C
1" V-bib	\$5.00

Cuff Options:

1" Rib knit cuffs with elastic	N/C
1 1/2" Rib knit cuffs with elastic	N/C

Piping Options:

Piping on side seams	\$8.00
----------------------	--------

Decoration Type:

Screen Print/Embroidery/Twill

Decoration Placements:

1, 2A, 2B, 3, 6, 7, 9C, 9V (V-bib only), 32, 35, SV, YL

NOTES:

Special Order styles: Youth S93AHYC
10% Up charge for 3XL - 20% Up charge for 4XL-5XL

OPTIONS

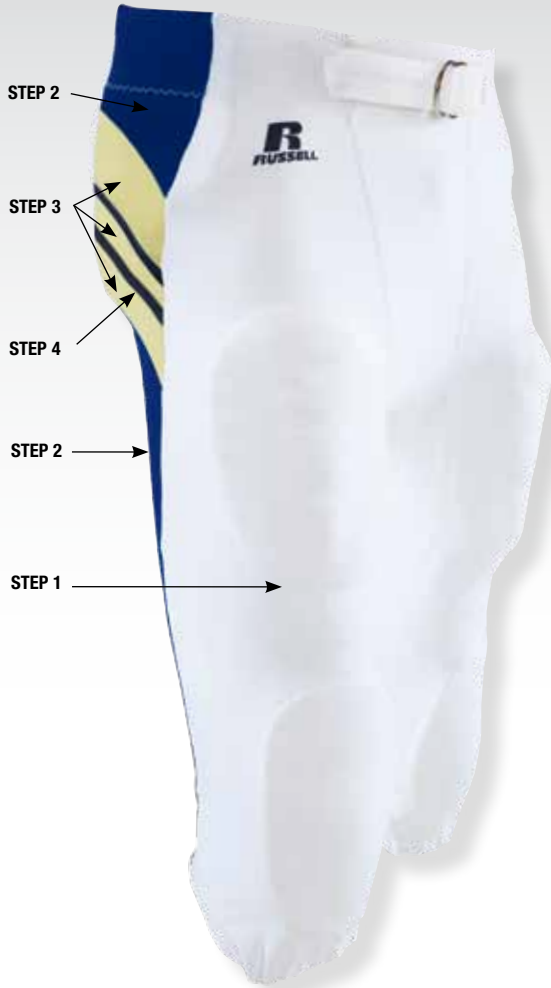


S9393CC as Decorated: \$94.00

S9393CC Construction & Decoration as pictured:

- Numbers: 2/C Russcote (PL# 2A, 6, 7), Pro Block

PRODUCT



ADULT PANELED GAME PANT WITH SIDE INSERTS AND PIPING

F46XPMN - XP Cloth (No Fly)	\$115.00
F46XPML - XP Cloth	\$115.00
F4662MN - 62 Cloth (No Fly)	\$100.00
F4662ML - 62 Cloth	\$100.00

Sizes: XS-XXL Oversize: 3XL-5XL

- Pant body (XP or 62 Cloth)
- Self material side panel tapering toward the back of pant (XP or 62 Cloth)
- Self material side insert (XP or 62 Cloth)
- ¼" Self material piping in insert (XP or 62 Cloth)
- 2 ½" Gripper elastic tunnel waist
- F46--MN - No fly front
- F46--ML - Fly front
- Double duke gusset
- 3 piece back
- Envelope thigh and knee pad pockets
- Gathered elastic leg openings
- Coverseamed

- Step 1 - Body
- Step 2 - Upper and lower side Panels
- Step 3 - Upper, center and lower side insert
- Step 4 - Piping

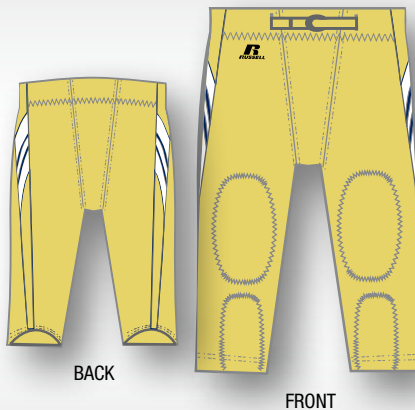
Length Options:	
I.D. Tags	\$4.00
Plus 1" inseam	\$4.00
Plus 2" inseam	\$6.00
Minus 1" inseam	\$4.00
Waist Options:	
2 Front belt loops	\$4.00
Slotted waist	\$6.00
Concealed slotted waist	\$8.00
Piping Options:	
Omit piping	N/C
Belt Options:	
1" FBC73M0 belt inserted & bar tacked	\$14.00
1 ½" FBC73M1 belt inserted & bar tacked	\$15.00
1" Web belt inserted & bar tacked	\$8.00
Special Options:	
Omit envelope thigh pad pockets	N/C
Knee brace cut outs	\$10.00

Decoration Type:
Embroidery/Twill

Decoration Placements:
18, 30, 31, RL

NOTES:
Blitz Concept style: F46XPMM
Special Order styles: Youth F4669WN
10% Up charge for 3XL - 20% Up charge for 4XL-5XL

OPTIONS



BACK

FRONT

PRODUCT

STEP 1 →



ADULT SOLID GAME PANT

F25XPMN - XP Cloth (No Fly)	\$105.00
F25XPML - XP Cloth	\$105.00
F2562MN - 62 Cloth (No Fly)	\$85.00
F2562ML - 62 Cloth	\$85.00

Sizes: XS-XXL Oversize: 3XL-5XL

- Pant body (XP or 62 Cloth)
- 2 1/2" Gripper elastic tunnel waist
- F25-MN - No fly front
- F25-ML - Fly front
- Double duke gusset
- 3 piece back
- Envelope thigh and knee pad pockets
- Gathered elastic leg openings
- Cover seamed

Step 1 - Body

Length Options:

I.D. Tags	\$4.00
Plus 1" inseam	\$4.00
Plus 2" inseam	\$6.00
Minus 1" inseam	\$4.00

Waist Options:

2 Front belt loops	\$4.00
Slotted waist	\$6.00
Concealed slotted waist	\$8.00

Braid Options:

1" Braid	\$6.00
1 1/2" Braid	\$6.50
2" Braid	\$7.00

Piping Options:

Piping on side seam-	\$6.00
----------------------	--------

Belt Options:

1" FBC73M0 belt inserted & bar tacked	\$14.00
1 1/2" FBC73M1 belt inserted & bar tacked	\$15.00
1" Web belt inserted & bar tacked	\$8.00

Special Options:

Omit envelope thigh pad pockets	N/C
Knee brace cut outs	\$10.00

OPTIONS



Decoration Type:

Embroidery/Twill

Decoration Placements:

18, 30, 31, RL

NOTES:

Stock style: Adult F2562MF (No Fly Front) Youth F2569WK (No Fly Front)
 Special Order styles: Youth F2569WN
 10% Up charge for 3XL - 20% Up charge for 4XL-5XL

PRODUCT



ADULT GAME PANT WITH INSERTS

F26XPMN - XP Cloth (No Fly)	\$115.00
F26XPML - XP Cloth	\$115.00
F2662MN - 62 Cloth (No Fly)	\$100.00
F2662ML - 62 Cloth	\$100.00

Sizes: XS-XXL Oversize: 3XL-5XL

- Pant body (XP or 62 Cloth)
- 2 ½" Gripper elastic tunnel waist
- F26--MN - No fly front
- F26--ML - Fly front
- Double duke gusset
- 3 piece back
- Envelope thigh and knee pad pockets
- Gathered elastic leg openings
- Contrasting self-material back leg insert (XP or 62 Cloth)
- 1/8" Piping along side seam bordering back leg insert
- Coverseamed

Step 1 - Body
 Step 2 - Inserts
 Step 3 - Piping

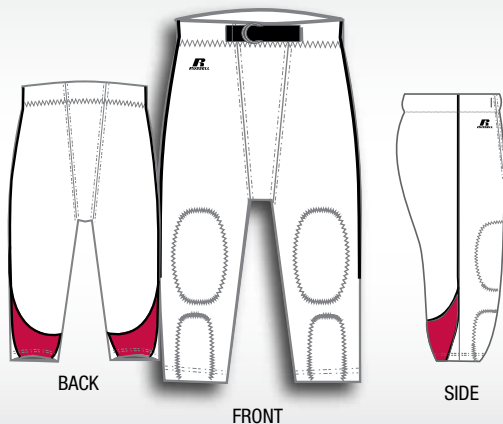
Length Options:	
I.D. Tags	\$4.00
Plus 1" inseam	\$4.00
Plus 2" inseam	\$6.00
Minus 1" inseam	\$4.00
Waist Options:	
2 Front belt loops	\$4.00
Slotted waist	\$6.00
Concealed slotted waist	\$8.00
Piping Option:	
Omit piping	N/C
Belt Options:	
1" FBC73M0 belt inserted & bar tacked	\$14.00
1 ½" FBC73M1 belt inserted & bar tacked	\$15.00
1" Web belt inserted & bar tacked	\$8.00
Special Options:	
Omit envelope thigh pad pockets	N/C
Knee brace cut outs	\$10.00

Decoration Type: Embroidery/Twill

Decoration Placements: 18, 30, 31, RL

NOTES: 10% Up charge for 3XL - 20% Up charge for 4XL-5XL
--

OPTIONS



PRODUCT

STEP 1



STEP 2

OPTIONS



ADULT PANELED GAME PANT

F27XPMN - XP Cloth (No Fly)	\$115.00
F27XPML - XP Cloth	\$115.00
F2762MN - 62 Cloth (No Fly)	\$95.00
F2762ML - 62 Cloth	\$95.00

Sizes: XS-XXL Oversize: 3XL-5XL

- Pant body (XP or 62 Cloth)
- 3" Self-material side panels
- 2 1/2" Gripper elastic tunnel waist
- F27--MN - No fly front
- F27--ML - Fly front
- Double duke gusset
- 3 Piece back
- Envelope thigh and knee pad pockets
- Gathered elastic leg openings
- Coverseamed

Step 1 - Body

Step 2 - Side panels

Length Options:

I.D. Tags	\$4.00
Plus 1" inseam	\$4.00
Plus 2" inseam	\$6.00
Minus 1" inseam	\$4.00

Waist Options:

2 Front belt loops	\$4.00
Slotted waist	\$6.00
Concealed slotted waist	\$8.00

Panel Options:

3" Rib knit side panels	N/C
-------------------------	-----

Piping Options:

Piping bordering side panels-	\$8.00
-------------------------------	--------

Belt Options:

1" FBC73M0 belt inserted & bar tacked	\$14.00
1 1/2" FBC73M1 belt inserted & bar tacked	\$15.00
1" Web belt inserted & bar tacked	\$8.00

Special Options:

Omit envelope thigh pad pockets	N/C
Knee brace cut outs	\$10.00

Decoration Type:

Embroidery/Twill

Decoration Placements:

18, 30, 31, RL

NOTES:

Blitz Concept style: Adult F2762MM
 Special Order styles: Youth F2769WN
 10% Up charge for 3XL - 20% Up charge for 4XL-5XL

PRODUCT



ADULT GAME PANT WITH POINTED SIDE INSERTS

F30XPMN - XP Cloth (No Fly)	\$115.00
F30XPML - XP Cloth	\$115.00
F3062MN - 62 Cloth (No Fly)	\$100.00
F3062ML - 62 Cloth	\$100.00

Sizes: XS-XXL Oversize: 3XL-5XL

- Pant body (XP or 62 Cloth)
- Pointed side inserts (XP or 62 Cloth)
- 2 1/2" Gripper elastic tunnel waist
- F30--MN - No fly front
- F30--ML - Fly front
- Double duke gusset
- 3 piece back
- Envelope thigh and knee pad pockets
- Gathered elastic leg openings
- Coverseamed

Step 1 - Body
Step 2 - Pointed side inserts

Length Options:	
I.D. Tags	\$4.00
Plus 1" inseam	\$4.00
Plus 2" inseam	\$6.00
Minus 1" inseam	\$4.00
Waist Options:	
2 Front belt loops	\$4.00
Slotted waist	\$6.00
Concealed slotted waist	\$8.00
Piping Options:	
Piping bordering side inserts	\$8.00
Belt Options:	
1" FBC73M0 belt inserted & bar tacked	\$14.00
1 1/2" FBC73M1 belt inserted & bar tacked	\$15.00
1" Web belt inserted & bar tacked	\$8.00
Special Options:	
Omit envelope thigh pad pockets	N/C
Knee brace cut outs	\$10.00

Decoration Type: Embroidery/Twill

Decoration Placements: 18, 30, 31, RL

NOTES: Special Order styles: Youth F3069WN 10% Up charge for 3XL - 20% Up charge for 4XL-5XL

OPTIONS



***NOTE:** Shown with piping option bordering side panels.

SPECIAL ORDER



PRODUCT



ADULT GAME PANT WITH POINTED SIDE INSERTS

F31XPMN - XP Cloth (No Fly)	\$115.00
F31XPML - XP Cloth	\$115.00
F3162MN - 62 Cloth (No Fly)	\$100.00
F3162ML - 62 Cloth	\$100.00

Sizes: XS-XXL Oversize: 3XL-5XL

- Pant body (XP or 62 Cloth)
- Pointed side inserts (XP or 62 Cloth)
- 1/8" Piping bordering side inserts
- 2 1/2" Gripper elastic tunnel waist
- F31--MN - No fly front
- F31--ML - Fly front
- Double duke gusset
- 3 piece back
- Envelope thigh and knee pad pockets
- Gathered elastic leg openings
- Coverseamed

- Step 1 - Body
- Step 2 - Pointed side inserts
- Step 3 - Piping

Length Options:	
I.D. Tags	\$4.00
Plus 1" inseam	\$4.00
Plus 2" inseam	\$6.00
Minus 1" inseam	\$4.00
Waist Options:	
2 Front belt loops	\$4.00
Slotted waist	\$6.00
Concealed slotted waist	\$8.00
Piping Options:	
Omit piping	N/C
1/4" Piping bordering side inserts	N/C
1/2" Piping bordering side inserts	N/C
Belt Options:	
1" FBC73M0 belt inserted & bar tacked	\$14.00
1 1/2" FBC73M1 belt inserted & bar tacked	\$15.00
1" Web belt inserted & bar tacked	\$8.00
Special Options:	
Omit envelope thigh pad pockets	N/C
Knee brace cut outs	\$10.00

Decoration Type: Embroidery/Twill

Decoration Placements: 18, 30, 31, RL

NOTES: Blitz Concept style: Adult F31XPMM Special Order styles: Youth F3169WN Special Order style with sublimated inserts: Adult F31XPSU 10% Up charge for 3XL - 20% Up charge for 4XL-5XL

OPTIONS



BACK

FRONT

SIDE

PRODUCT



ADULT GAME PANT WITH PIPING

F32XPMN - XP Cloth (No Fly)	\$115.00
F32XPML - XP Cloth	\$115.00
F3262MN - 62 Cloth (No Fly)	\$100.00
F3262ML - 62 Cloth	\$100.00

Sizes: XS-XXL Oversize: 3XL-5XL

- Pant body (XP or 62 Cloth)
- 1/8" Piping
- 2 1/2" Gripper elastic tunnel waist
- F32--MN - No fly front
- F32--ML - Fly front
- Double duke gusset
- 3 piece back
- Envelope thigh and knee pad pockets
- Gathered elastic leg openings
- Cover seamed

Step 1 – Body
Step 2 – Piping

Length Options:

I.D. Tags	\$4.00
Plus 1" inseam	\$4.00
Plus 2" inseam	\$6.00
Minus 1" inseam	\$4.00

Waist Options:

2 Front belt loops	\$4.00
Slotted waist	\$6.00
Concealed slotted waist	\$8.00

Belt Options:

1" FBC73M0 belt inserted & bar tacked	\$14.00
1 1/2" FBC73M1 belt inserted & bar tacked	\$15.00
1" Web belt inserted & bar tacked	\$8.00

Special Options:

Omit envelope thigh pad pockets	N/C
Knee brace cut outs	\$10.00

Decoration Type:

Embroidery/Twill

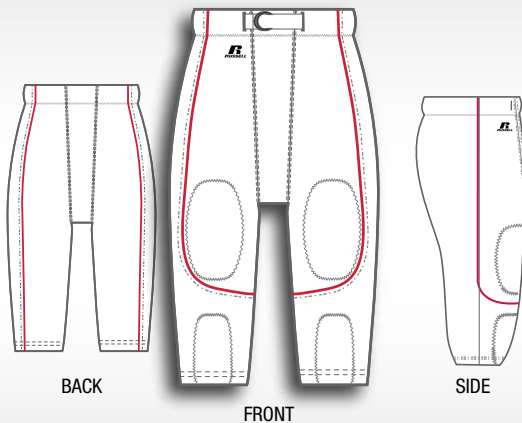
Decoration Placements:

18, 30, 31, RL

NOTES:

10% Up charge for 3XL - 20% Up charge for 4XL-5XL

OPTIONS



SPECIAL ORDER

PRODUCT



ADULT SPLIT PANELED GAME PANT

F35XPMN - XP Cloth (No Fly)	\$115.00
F35XPML - XP Cloth	\$115.00
F3562MN - 62 Cloth (No Fly)	\$100.00
F3562ML - 62 Cloth	\$100.00

Sizes: XS-XXL Oversize: 3XL-5XL

- Pant body (XP or 62 Cloth)
- 3" Self-material split side panels
- 2 1/2" Gripper elastic tunnel waist
- F35-MN - No fly front
- F35-ML - Fly front
- Double duke gusset
- 3 piece back
- Envelope thigh and knee pad pockets
- Gathered elastic leg openings
- Coverseamed

Step 1 - Body
 Step 2 - Upper side panels
 Step 3 - Lower side panels

Length Options:	
I.D. Tags	\$4.00
Plus 1" inseam	\$4.00
Plus 2" inseam	\$6.00
Minus 1" inseam	\$4.00
Waist Options:	
2 Front belt loops	\$4.00
Slotted waist	\$6.00
Concealed slotted waist	\$8.00
Piping Options:	
Piping bordering side panels-	\$8.00
Belt Options:	
1" FBC73M0 belt inserted & bar tacked	\$14.00
1 1/2" FBC73M1 belt inserted & bar tacked	\$15.00
1" Web belt inserted & bar tacked	\$8.00
Special Options:	
Omit envelope thigh pad pockets	N/C
Knee brace cut outs	\$10.00

OPTIONS



Decoration Type:
Embroidery/Twill

Decoration Placements:
18, 30, 31, RL

NOTES:
10% Up charge for 3XL - 20% Up charge for 4XL-5XL