



**LADY
WILDCATS**

PIRATES

STOCK SOFTBALL



The **QUICK** Service Provider For
All Your Diamond Needs

FAST. RELIABLE. SERVICE.



**SUBLIMATED QUICK
TURN PROGRAM**

ARRIVES IN 17-20 BUSINESS DAYS

**BASE HIT STOCK
DECORATED PROGRAM**

ARRIVES IN 12-15 BUSINESS DAYS

**QUICK TURN BRAIDED
PANTS PROGRAM**

ARRIVES IN 7-10 BUSINESS DAYS



**CONTACT YOUR RUSSELL TEAM
DEALER FOR PRODUCT AND
PROGRAM DETAILS**

2017 WOMEN'S BASE HIT

STOCK DECORATED PROGRAM



7R6X2XK (Adult)



7R8X2XK (Adult)
7R8X2GK (Youth)

PROGRAM DATES:

1/9/2017 - 6/26/2017

TURN TIME:

Uniforms will be delivered 12-15 Business Days from order date

NEW ORDERS:

Minimum of 15 pieces per style, color and decoration

DECORATION:

Jerseys:

1 or 2 Color Russcote

Includes Team Name and Front and Back Numbers

Fonts - Team Name Available in Script with Tailsweep, Script, Full Block, Times Bold, Stinger

Numbers Available in Full Block, Times Bold, Stinger

Placements:

Team Name Placements: 7

Numbers: 4" Front Number PL# 10 or 11 and 6" or 8" Back Number PL# 6

RUSSELL ATHLETIC

QUICK TURN BRAID PROGRAM

HIGH QUALITY SOFTBALL PANTS
20 PREMIUM TEAM COLOR BRAID OPTIONS
SHIPS IN 5 WORKING DAYS!!!



SIDE VIEW



BACK VIEW

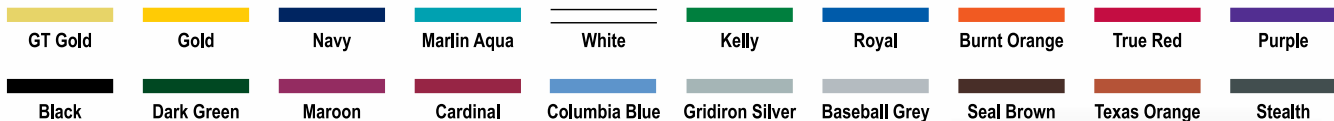
738LGXK

**WOMEN'S KNICKER LENGTH
DIAMOND FIT SOFTBALL PANT**

\$46.00

PROGRAM DETAILS

- 1 Braid Type: 106 - 1/8" - Pattern 0
- Colors: 20 Current Stock Colors



- No minimums but normal up-charges will apply for orders less than 6 units
- Order Entry Catalog: Under the Factory Stock Tab called, "Quick Turn Braid Program"
- Normal discounts and terms apply
- Program Starts 1/18/16

*** PRICES ABOVE ARE RETAIL PRICES THAT
INCLUDE THE PRICE FOR 1/8" BRAID**





WOMEN'S STRETCH FAUX BUTTON FRONT JERSEY

737VTX1 - VT Cloth \$44.00

92% Nylon/8% Spandex - Colors

92% Polyester/8% Spandex - White

Sizes: S-XXL

- Faux placket pullover jersey with raglan sleeves
- Dri-Power® moisture wicking fabric
- Modified sleeve length
- Tapered waist and curved hemmed bottom
- Back panel wraps to front with no side seam
- 4 Side sew label lower left front
- "R RUSSELL" logo left sleeve
- Imported

Options:

1/8" Braid around neck and down front	\$12.00
1/2" Braid around neck and down front	\$13.00
1/8" Braid 1" up from sleeve ends	\$8.00
1/2" Braid 1" up from sleeve ends	\$9.00
1/2" Braid on sleeve end	\$9.00

Decoration Type:

Screen Print, Embroidery, Twill

Decoration Placements:

6, 7N*, 8, 9, 10, 11, 32, 35, BN*
 Screen Print not available for placement 7N
 Screen Print ONLY for BN

Notes:

Updated sleeve length for freedom of movement
 Faux placket pullover jersey – sewn placket allows for cleaner twill decoration by eliminating gapping between buttons.



COLORS



BG7 Baseball Grey	BLK Black	CRD Cardinal	DGR Dark Green	MAR Maroon	NAV Navy	PUR Purple	ROY Royal	TRR True Red	WHI White
----------------------	--------------	-----------------	-------------------	---------------	-------------	---------------	--------------	-----------------	--------------



WOMEN'S 2-BUTTON COLOR BLOCK JERSEY

7R6X2XK - X2 Cloth
100% Polyester Interlock

\$20.00

Sizes: S-XXL

- Two button placket jersey with set-in sleeves
- Self-material piping in the insert
- HS Cloth in side and upper shoulder insert for more breathability
- Curved hemmed bottom
- Pad print label at inside center back neck
- Neck taping with Russell Athletic branded
- "R RUSSELL" left sleeve
- Imported

Decoration Type:

Screen Print

Decoration Placements:

3, 6, 7, 8, 9, 10, 11, 32, 35, BN

Notes:

Low bleed ink recommended



COLORS



- | | | | | | | | | | | |
|-------------------------|--------------------------------|---------------------------------|----------------------------|------------------------------|------------------------|--------------------------|------------------------|--------------------------|-------------------------|----------------------------|
| B9A | B9O | C9C | C9A | D9B | G9L | M9B | N9B | P9B | R9B | T9B |
| Black/
Baseball Grey | Burnt Orange/
Baseball Grey | Columbia Blue/
Baseball Grey | Cardinal/
Baseball Grey | Dark Green/
Baseball Grey | Gold/
Baseball Grey | Maroon/
Baseball Grey | Navy/
Baseball Grey | Purple/
Baseball Grey | Royal/
Baseball Grey | True Red/
Baseball Grey |



PERFORMANCE V-NECK SOFTBALL JERSEY

7R8X2XK – X2 Cloth \$20.00
 7R8X2GK – X2 Cloth (Youth) \$18.00
 100% Polyester Interlock

Sizes: S-XXL Youth Sizes: S-XL

- Moisture wicking fabric
- V-neck self-material neck
- White front to a color back body to give more of a custom look
- Russell Athletic logo in neck taping
- "R RUSSELL" on left sleeve
- Imported

Decoration Type:
 Screen Print

Decoration Placements:
 3, 6, 7, 8, 9, 10, 11, 32, 35, BN



COLORS

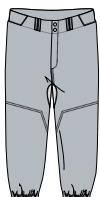




BACK VIEW



SIDE VIEW



BG7
Baseball Grey



BLK
Black



NAV
Navy



WHI
White

WOMEN'S LOW RISE KNICKER "DIAMOND FIT SERIES" PANT

738LGXK - LG Cloth

\$40.00

Sizes: XS-XXL

- Mesh inserts for breathability and better range of motion during play
- Two set-in rear pockets with zipper closure
- Low rise to hit 2" below the natural waist
- Stretch elastic waistband for better movement and silicone gripper to keep your jersey in
- Shaped with belt loops
- Two snap closure with brass zipper
- Two set-in rear pockets with zipper closure
- Double knees
- Open bottom pant hemmed leg opening
- Graded Inseam: XS-17", S-18", M-19", L-20", XL-21", XXL-22"
- "R RUSSELL" logo back left
- Imported

Options:

- 1/8" Braid down sides \$ 6.00
- 1/2" Braid down sides \$10.00
- 1" Braid down sides \$12.00

WOMEN'S LOW RISE KNICKER LENGTH PANT

7S4DBXK - DB Cloth

\$32.00

100% Polyester Double Knit

Sizes: XS-XXL

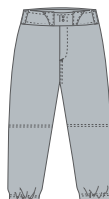
- Low rise to hit 2" below the natural waist
- Elastic waistband with shaped belt loops
- Two single welt rear pockets
- Two snap closure with brass zipper
- Double knees extending to bottom opening
- Elastic hemmed leg opening
- Inseam length designed to hit under the knee
- Standard Inseam: XS- 17", S- 18", M- 19", L- 20", XL- 21", XXL- 22"
- "R RUSSELL" logo back left hip
- Imported

Options:

- 1/8" Braid down side seam \$ 6.00
- 1/2" Braid down side seam \$10.00
- 1" Braid down the side seam \$12.00
- 1 1/2" Braid down the side seam \$15.00

Notes:

Pant will hook-up to most jerseys



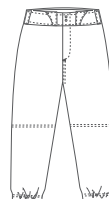
BG7
Baseball Grey



BLK
Black



NAV
Navy



WHI
White

GIRLS LOW RISE KNICKER LENGTH PANT WITH BELT LOOPS

7S3DBGK - DB Cloth (Girls)
100% Polyester Double Knit

\$23.50

Girls Sizes: S-L

- Low rise to hit 2" below the natural waist
- Elastic waistband with belt loops and one single welt rear pocket
- Two snap closure with brass zipper
- Double knees extending to bottom opening
- Elastic hemmed leg opening
- Inseam length designed to hit under the knee
- Standard Inseam: S-L: 17"
- "R RUSSELL" logo back left hip
- Imported

Options:

- 1/8" Braid down side seam \$ 6.00
- 1/2" Braid down side seam \$10.00
- 1" Braid down the side seam \$12.00

Notes:

Pant has one welt rear pocket on left and drawcord in elastic waistband



BG7
Baseball Grey

BLK
Black

NAV
Navy

WHI
White



SHORT SLEEVE PULLOVER

872RVMK - RV Cloth
 872RVBK - RV Cloth (Youth)
 100% Polyester Woven

\$40.00
 \$35.00

Adult Sizes: S-XXL Oversize: 3XL Youth Sizes: S-XL

- Very lightweight breathability fabric
- Moisture wicking capability
- Full cut body with quarter zip neck to go over uniform
- Waist has shock cord with cord lock on wearer's left
- 4 side sew label lower left front
- "R RUSSELL" left sleeve end
- Imported

Decoration Type:
 Embroidery, Twill

Decoration Placements:
 7C, 8, 9, 32, 35, BN, N4



* Youth is only available in these colors



LONG SLEEVE PULLOVER

875QXMK - QX Cloth
100% Polyester

CLOSEOUT: \$32.00

Sizes: S-XXL Oversize: 3XL

- Dri-Power® moisture wicking fabric
- Full cut body with quarter zip neck
- Body and sleeves, 100% Polyester with mechanical stretch
- Underarm inserts, upper back inserts, and sleeve binding (100% Polyester with mechanical stretch)
- Waist has shock cord with cord lock on wearer's left
- 4 side sew label lower left front
- 3/8" stretch binding at sleeve end
- "R RUSSELL" center back neck
- Imported

Decoration Type:

Screen Print, Embroidery, Twill

Decoration Placements:

1, 3, 6, 7, 7C, 8, 9, 10, 11, 32, 35, 36, BN

INVENTORY ONLY

B9A Black/ Baseball Grey C9A Cardinal/ Baseball Grey D9B Dark Green/ Baseball Grey M9B Maroon/ Baseball Grey N9B Navy/ Baseball Grey



P9B Purple/ Baseball Grey R9B Royal/ Baseball Grey SBG Stealth/ Baseball Grey T9B True Red/ Baseball Grey XDE White/ Stealth

DUGOUT JACKET

814LRMK - LR Cloth CLOSEOUT: \$75.00
100% Texturized Nylon Polyester Fill Lining

Sizes: S-XXL Oversize: 3XL

- Water resistant
- Full snap front (covered metal snaps)
- Polyester fill diamond quilted lining
- Raglan sleeves
- 1/8" contrast start and stop piping at front and back raglan seams
- Contrasting side panels
- Solid rib knit collar, cuff and bottom band
- Single welt front pockets
- "R RUSSELL" center back neck
- Imported

Decoration Type:

Embroidery, Twill

Decoration Placements:

3, 7, 8, 9, 32, 35

INVENTORY ONLY



BWH Black/ White CWH Cardinal/ White DWI Dark Green/ White MWH Maroon/ White



NWH Navy/ White PWH Purple/ White ROW Royal/ White TRW True Red/ White



"R" Russell logo color is tonal as shown in image.



ADJUSTABLE BASEBALL BELT

BBBELTA – (Adult)	\$7.00
BBBELTY – (Youth)	\$7.00

Sizes: OSFA; Adjustable 32"-46" (Adult), Adjustable 18"-32" (Youth)

- Dri-Power® moisture wicking fabric
- Full cut body with quarter zip neck
- Body and upper sleeves, 100% polyester with mechanical stretch
- Lower sleeve inserts, back inserts, and sleeve end (100% Polyester mesh with mechanical stretch)
- Waist has shock cord with cord lock on wearer's left
- 4 side sew label lower left front
- "R RUSSELL" center back neck
- Imported

Notes:

Reduced width for a better fit on youth baseball pants

RUSSELL ATHLETIC PERFORMANCE SOCKS

SOCKS

NEW



SHOE SIZE			
SIZE	YOUTH	WOMEN'S	MEN'S
S	3Y-5Y		
M	5Y-7Y	4-6	6-8
L		6-10	8-12
XL		11-13	12-15

RUSSELL "P & R" CREW SOCK RTS01C1

\$8.50 per pair

- Sold in packs of single packs
- 92% Polyester; 6% Rubber; 2% Spandex – White
- 84% Polyester; 10% Nylon; 5% Rubber; 1% Spandex – Colors
- 11 Color offerings
- Moisture management
- Arch support
- Reinforced toe
- Mesh on top of foot for ventilation
- Half cushion sole
- Made in China

COLOR OFFERING

- UUA** Black/White/Gray
- ATJ** Burnt Orange/White/Black
- CWB** Cardinal/White/Black
- DHB** Dark Green/White/Black
- ATK** Maroon/White/Stealth
- ATF** Navy/White/Stealth
- ATH** Purple/White/Stealth
- RWK** Royal/White/Black
- TWB** True Red/White/Black
- ATI** Watermelon Pink/White/Stealth
- HSK** White/Stealth/Black

SHOE SIZE			
SIZE	YOUTH	WOMEN'S	MEN'S
XS	3-6		
S	5-8		
M		4-6	6-8
L		6-10	8-12
XL		11-15	12-16

COLOR OFFERING

- SVF** Aqua/White
- BWH** Black/White
- BOW** Burnt Orange/White
- CWH** Cardinal/White
- COW** Columbia Blue/White
- DWI** Dark Green/White
- GOB** Gold/Black
- KWH** Kelly/White
- MWH** Maroon/White
- NWH** Navy/White
- PWH** Purple/White
- ROW** Royal/White
- TRW** True Red/White
- WMW** Watermelon Pink/White
- GTK** GT Gold/Black
- XDE** White/Stealth

RUSSELL ALL SPORT SOCK RTS01AS

\$9.00 per pair

- Colors: 84% Polyester, 11% Nylon, 3% Rubber, 2% Spandex
- White: 95% Polyester, 3% Rubber, 2% Spandex
- Sizes XS-XL
- 16 color offering
- Left & right Indicator on foot (All Sport Sock Only)
- Sizing on inside rim of sock
- Moisture management
- Arch and ankle support
- Reinforced toe
- Mesh on top of foot for ventilation
- Half cushion sole
- Sold in retail packaging in pairs; 12 pairs equal dozen



INVENTORY ONLY



RUSSELL CREW SOCK RTS03AQ

\$16.50 per 3-pack

- 57% Polyester, 26% Cotton, 10% Nylon, 6% Rubber, 1% Spandex-White and Colors
- Size M-XL
- 2 color offering
- Moisture management
- Arch support
- Reinforced toe
- Mesh on top of foot for ventilation
- Half cushion sole
- Retail Packaging

COLOR OFFERING

- BWH** Black/White
- XDE** White/Stealth

INVENTORY ONLY



RUSSELL LOW CUT SOCK RTS03MP

\$14.50 per 3-pack

- 54% Polyester, 28% Cotton, 12% Olefin, 5% Rubber, 1% Spandex-White and Colors
- Size M-XL
- 2 color offering
- Moisture management
- Arch support
- Reinforced toe
- Mesh on top of foot for ventilation
- Half cushion sole
- Retail Packaging

COLOR OFFERING

- BWH** Black/White
- XDE** White/Stealth

INVENTORY ONLY



RUSSELL QUARTER SOCK RTS03WP

\$14.50 per 3-pack

- 54% Polyester, 28% Cotton, 12% Olefin, 5% Rubber, 1% Spandex-White and Colors
- Size M-XL
- 2 color offering
- Moisture management
- Arch support
- Reinforced toe
- Mesh on top of foot for ventilation
- Half cushion sole
- Retail Packaging

COLOR OFFERING

- BWH** Black/White
- XDE** White/Stealth

INVENTORY ONLY

NEW

SHOE SIZE			
SIZE	YOUTH	WOMEN'S	MEN'S
XS	3-6		
S	5-8		
M		4-6	6-8
L		6-10	8-12
XL		11-15	12-16

COLOR OFFERING

- BWH** Black/White
- BOW** Burnt Orange/White
- CWH** Cardinal/White
- COW** Columbia Blue/White
- DWI** Dark Green/White
- GOB** Gold/Black
- KWH** Kelly/White
- MWH** Maroon/White
- NWH** Navy/White
- PWH** Purple/White
- ROW** Royal/White
- TRW** True Red/White
- WMW** Watermelon Pink/White
- GTK** GT Gold/Black
- XDE** White/Stealth

RUSSELL ALL SPORT SOCK RTS01A1

\$9.50 per pack

- 88% Polyester, 7% Nylon, 4% Rubber, 1% Spandex
- 15 color offering
- Left & right indicator on foot (All Sport Sock Only)
- Sizing on inside rim of sock
- Moisture management
- Arch and ankle support
- Reinforced toe
- Mesh on top of foot for ventilation
- Half cushion sole
- Sold in retail packaging in pairs; 12 pairs equal dozen



NEW! Odor Management Technology - "Silvadur™"



RUSSELL WOMEN'S DUAL LAYERED LO-RISE SLIDING SHORT

RWL629 - Women's **\$27.00**

SIZES: Women's (XS-XL)
COLOR CODE: BLK, DMP, NAV, ROY, SIG, WHI

- Body: 85% Polyester; 15% Spandex; Gusset: 90% Polyester; 10% Spandex
- Dual layered to aid in prevention of abrasions
- Excellent for most contact sports
- Moisture management and antimicrobial properties
- 6" Inseam (XS-L) 6-1/4" (XL)
- 1" "Russell" branded plush elastic waistband
- Imported

INVENTORY ONLY



BIKE® ADULT SOFTBALL KNEE PAD

BASBKP - Women's **\$23.00**

SIZES: Adult (NS) Fits Most
COLOR CODE: BLK, WHI

- 42% Polyester, 41% Elastic, 17% Rayon
- Pull-on sleeve construction excellent for sliding
- Provides side and frontal knee protection with 3/8" neoprene padding
- Sold in single packs only

INVENTORY ONLY



BIKE® ADULT CONTOURED KNEE PAD

BAKP75 - Adult **\$12.50**

SIZES: Adult (XS- L)
COLOR CODE: BLK, WHI

- Contoured design for multi-sport use
- 100% Polyester outer covering
- 7 1/4" length
- New! Dri-Power® moisture wicking lining
- 3/8" foam pad, plus 1/4" urethane padding
- Sold in pairs
- REPLACES ORIGINAL STYLE 7275
- Minimum order quantity 2

INVENTORY ONLY



RUSSELL ATHLETIC® 3" WRIST BAND

RAWB15 - Adult **\$8.50**

SIZES: NS

COLOR CODE: BLK, CBU, C03, CRD, DGR, DMP, GAT, MAR, NAV, ROY, TRR, WHI

- **DMP Inventory Only**
- Expandable knitted construction that allows sweat to be absorbed
- Embroidered Russell® branded logo
- Sold in pairs



RUSSELL ATHLETIC® 2" HEADBAND

RAHB10 - Adult **\$10.00**

SIZES: NS

COLOR CODE: BLK, CBU, C03, CRD, DGR, DMP, GAT, MAR, NAV, ROY, TRR, WHI

- **DMP Inventory Only**
- Expandable knitted construction that allows sweat to be absorbed
- Embroidered Russell® branded logo

SIZES

	XS	S	M	L	XL
RWL629 - Waist Size	22-24"	24-26"	28-30"	32-34"	34-36"
BAKP75 - Knee Circumference	10-13"	10-13"	14-15"	15-17"	

russell athletic
Women's
collection

all purpose
on and off the field

sleek styles

updated fit

lightweight fabrics

performance inspired

R
RUSSELL
ATHLETIC.