



UNIFORM BUILDER



team.russellathletic.com

CREATE YOUR OWN CUSTOMIZED UNIFORM

- Personalized team name
- Custom colors
- Realistic images
- Fill your personal "Locker Room" with a uniform for each sport



TOGETHER WE 

PRODUCT



Adult Faux Placket Color Block Game Jersey

3D5VTMK - VT Cloth / 72 Cloth **\$55.00**
 - VT – 92% Nylon / 8% Spandex (Color)
 - VT – 92% Polyester / 8% Spandex (White)
 - 72 – 90% Nylon / 10% Spandex (Color)
 - 72 – 91% Polyester / 10% Spandex (White)

Adult Sizes: S-XXL

- Faux placket pullover jersey
- VT Cloth – Body and underarm inserts
- 72 Cloth – Raglan sleeves, front and back side inserts
- Curved hemmed bottom with extended tail
- 4 Side sew label lower left front
- "R RUSSELL" center back neck

Options:

1/8" Braid around neck and down front \$12.00
 1/2" Braid around neck and down front \$13.00

Decoration Type:

Screen Print/Embroidery/Twill

Decoration Placements:

3, 6, 7N*, 8, 9, 10, 11, 32, 35, BN
 *Screen Print not available on placement #7N

Notes:

Stock Pant Hook-up: 33147M1, 33347MK, 234RHMK and 235RHMK
 Faux placket pullover jersey – sewn placket allows for cleaner twill decoration by eliminating gapping between buttons.
 *PL# 7N – REQUIRES NEW ART – No pattern on hand will be accepted. A new pattern charge we be applied.

PRODUCT



Adult Faux Placket Pullover Jersey

336VTMK - VT Cloth **\$55.00**
336VTBK - VT Cloth (Youth) **\$48.00**
 - 92% Nylon / 8% Spandex - Color
 - 92% Polyester / 8% Spandex - White

Adult Sizes: M-XXL Oversize: 3XL Youth Sizes: M-XL

- Faux placket pullover jersey with set-in sleeves
- Contrast self-material inserts
- Curved hemmed bottom
- 1/8" Contrasting piping at neck, placket edge and shoulders
- 4 Side sew label lower left front
- "R RUSSELL" center back neck

Options:

Not Available

Decoration Type:

Screen Print/Embroidery/Twill

Decoration Placements:

3, 6, 7N*, 8, 9, 10, 11, 32, 35
 Screen Print not available on placement #7N

NOTES:

Stock Pant Hook-up: 33147M1 and 33347MK
 10% Up charge for 3XL
 Faux placket pullover jersey – sewn placket allows for cleaner twill decoration by eliminating gapping between buttons.
 *PL# 7N – REQUIRES NEW ART – No pattern on hand will be accepted. A new pattern charge will be applied.

COLORS



COLORS



PRODUCT



Adult Button Front Game Jersey

34347MK - 47 Cloth **\$50.00**
 - 100% Nylon Stretch Double Knit

Sizes: M-XXL Oversize: 3XL

- Full button front with raglan sleeve
- Curved hemmed bottom with extended tail
- 4 Side sew label lower left front
- "R RUSSELL" center back neck

Options:

1/8" Braid around neck and down front	\$12.00
1/2" Braid around neck and down front	\$13.00
1/8" Braid 1" up from sleeve end	\$8.00
1/2" Braid 1" up from sleeve end	\$9.00
1/2" Braid on sleeve end	\$9.00
1" Braid on sleeve end	\$10.00

Decoration Type:

Screen Print/Embroidery/Twill

Decoration Placements:

1, 3, 6, 6L, 7, 8, 9, 10, 11, 32, 35, BN (*Screen Print not available on placement #7)

Notes:

Stock Pant Hook-up 33147M1 & 33347MK
 10% upcharge for 3XL

PRODUCT



Adult Stretch Performance Button Front Jersey

343PMMK - PM Cloth **\$46.00**
343PMBK - PM Cloth (Youth) **\$40.00**

- 92% Nylon/8% Spandex - Colors
- 92% Polyester/8% Spandex - White

Adult Sizes: M-XXL Oversize: 3XL Youth Sizes: M-XL

- Performance Mesh with Dri-Power® moisture wicking fabric
- Raglan sleeve and coverseamed armholes
- Curved hemmed bottom with extended tail
- 4 Side sew label lower left front
- "R RUSSELL" center back neck

Options:

1/8" Braid around neck and down front	\$12.00
1/2" Braid around neck and down front	\$13.00
1/8" Braid 1" up from sleeve ends	\$8.00
1/2" Braid 1" up from sleeve end	\$9.00
1/2" Braid on sleeve end	\$9.00
1" Braid on sleeve end	\$10.00

Decoration Type:

Screen Print/Embroidery/Twill

Decoration Placements:

1, 3, 6, 6L, 7*, 8, 9, 10, 11, 32, 35, BN
 *Screen Print not available on pl 7

Notes:

10% upcharge for 3XL

COLORS



BG7
Baseball Grey



34
White

COLORS



BG7 Baseball Grey BLK Black CRD Cardinal DGR Dark Green MAR Maroon

NAV Navy ROY Royal TRR True Red WHI White

PRODUCT



Adult Stretch Performance Mesh Sleeveless Jersey

312PMMK – PM Cloth \$42.00

- 92% Nylon/8% Spandex - Colors
- 92% Polyester/8% Spandex - White

Adult Sizes: M-XXL Oversize: 3XL

- Performance Mesh with Dri-Power® moisture wicking fabric
- Full button
- Sleeveless
- Curved hemmed bottom with extended tail
- 4 Side sew label lower left front
- "R RUSSELL" center back neck

Options:

1/8" Braid around neck/down front	\$12.00
1/2" Braid around neck/down front	\$13.00
1/8" Braid around armholes	\$8.00
1/2" Braid around armholes	\$9.00

Decoration Type:

Screen Print/Embroidery/Twill

Decoration Placements:

3, 6, 6L, 7, 8, 9, 10, 11, BN
Screen Print not available on pl 7

Notes:

10% Up charge for oversize 3XL

PRODUCT



Youth Button Front Baseball Game Jersey

334RHBK – RH Cloth (Youth) \$26.00

-100% Polyester Stretch Double Knit (Heavyweight Rod Knit)

Youth Sizes: S-XL

- Full button front with raglan sleeves
- Curved hemmed bottom with extended tail
- 4 Side sew label lower left front
- "R RUSSELL" center back neck

Options:

1/8" Braid around neck/down front	\$12.00
1/2" Braid around neck/down front	\$13.00
1/8" Braid 1" up from sleeve ends	\$8.00
1/2" Braid 1" up from sleeve ends	\$9.00
1/2" Braid on sleeve end	\$9.00
1" Braid on sleeve ends	\$10.00

Decoration Type:

Screen Print/Embroidery/Twill

Decoration Placements:

1, 3, 6, 6L, 7*, 8, 9, 10, 11, 32, 35, BN
*Screen Print not available on pl #7

Notes:

Pant Hook-Up 234RHBK (Boot Cut), 235RHBK

COLORS



COLORS



PRODUCT



Youth Full Button Front Sleeveless Jersey

335RHBK - RH Cloth (Youth) \$22.00
 -100% Polyester Stretch Double Knit (Heavyweight Rod Knit)

Youth Sizes: S-XL

- Full button front sleeveless jersey
- Curved hemmed bottom with extended tail
- 4 Side sew label lower left front
- "R RUSSELL" center back neck

Options:

1/8" Braid around neck and down front	\$12.00
1/2" Braid around neck and down front	\$13.00
1/8" Braid around armholes	\$8.00
1/2" Braid around armholes	\$9.00

Decoration Type:

Screen Print/Embroidery/Twill

Decoration Placements:

3, 6, 6L, 7*, 8, 9, 10, 11, BN
 *Screen Print not available on pl #7

Notes:

Pant Hook-Up 234RHBK (Boot Cut), 235RHBK

PRODUCT



Performance Two Button Placket Jersey

318QCMK - QC Cloth \$29.00
318QCBK - QC Cloth (Youth) \$26.00
 -100% Polyester texture with drape and mechanical stretch

Adult Sizes: S-XXL Oversize: 3XL Youth Sizes: S-XL

- Two button placket jersey with raglan sleeves
- Self-material knit collar with contrasting front / back side inserts
- Curved hemmed bottom
- 4 Side sew label lower left front
- "R RUSSELL" center back neck

Decoration Type:

Screen Print / Embroidery

Decoration Placements:

1, 3, 6, 6L, 7, 8, 9, 10, 11, 32, 35, BN

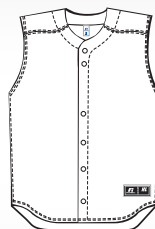
Notes:

Low bleed ink recommended
 10% up charge for 3XL

COLORS



BG7
Baseball Grey



WHI
White

COLORS

BWH Black/ White	BOW Burnt Orange/ White	CWH Cardinal/ White	COW Columbia Blue/White	DWI Dark Green/ White	GWH Gold/ White	AHI GT Gold/ White	KWH Kelly/ White
------------------------	----------------------------------	---------------------------	-------------------------------	--------------------------------	-----------------------	--------------------------	------------------------



MWH Maroon/ White	NWH Navy/ White	PWH Purple/ White	ROW Royal/ White	SIO Soul Blue/ White	TOW Texas Orange/ White	TRW True Red/ White
-------------------------	-----------------------	-------------------------	------------------------	----------------------------	----------------------------------	---------------------------

PRODUCT



Performance Two Button Placket Jersey

313QCMK - QC Cloth **\$29.00**
 313QCBK - QC Cloth (Youth) **\$26.00**

-100% Polyester texture with drape and mechanical stretch

Adult Sizes: S-XXL Oversize: 3XL Youth Sizes: S-XL

- Two button placket jersey with raglan sleeves
- Self-material knit collar with contrasting neck and sleeve panels
- 1/8" Contrast piping around neck placket and sleeve end
- Curved hemmed bottom
- 4 Side sew label lower left front
- "R RUSSELL" center back neck

Decoration Type:

Screen Print / Embroidery

Decoration Placements:

1, 3, 6, 6L, 7, 8, 9, 10, 11, 32, 35, BN

Notes:

Low bleed ink recommended
 10% up charge for 3XL

PRODUCT



Dri-POWER®

Dri-Power® Color Block Tee

D05DPM0 - DP Cloth **\$21.00**
 D06DPB0 - DP Cloth (Youth) **\$18.50**

- 100% Polyester Closed Hole Mesh

Sizes: S-3XL; Youth Sizes: S-XL

- Dri-Power® moisture wicking fabric
- Self-material collar
- Self-material back neck tape
- Raglan sleeves
- Self-material inserts and piping
- Two-needle hem sleeve openings and bottom
- "R RUSSELL" at left sleeve end
- Screen printable performance fabric

Decoration Type:

Screen Print, Embroidery

Decoration Placements :

6, 7, 8, 9, 9C, BN

Notes:

LAST SEASON AVAILABLE

COLORS

BWH Black/ White	CWH Cardinal/ White	COW Columbia Blue/ White	DWI Dark Green/ White	GWH Gold/ White	MWH Maroon/ White	NWH Navy/ White
------------------------	---------------------------	-----------------------------------	--------------------------------	-----------------------	-------------------------	-----------------------



PWH Purple/ White	ROW Royal/ White	TRW True Red/ White	WBK White/ Black	WNA White/ Navy	WRO White/ Royal	WTR White/ True Red
-------------------------	------------------------	------------------------------	------------------------	-----------------------	------------------------	------------------------------

COLORS

KNR Black/ Gridiron Silver	CIS Cardinal/ Gridiron Silver	DDS Dark Green/ Gridiron Silver	MGV Maroon/ Gridiron Silver
----------------------------------	-------------------------------------	---------------------------------------	-----------------------------------



NNR Navy/ Gridiron Silver	PIR Purple/ Gridiron Silver	RIR Royal/ Gridiron Silver	TES True Red/ Gridiron Silver
---------------------------------	-----------------------------------	----------------------------------	-------------------------------------

PRODUCT



Premium Game Pant

33147M1 – 47 Cloth **\$61.00**
33147B1 – 47 Cloth (Youth) **\$50.00**
 - 100% Nylon Stretch Double Knit

Adult Sizes: 28-42 Oversize: 44 Youth Sizes: S-XL

- 2 ½" deluxe elastic waistband with silicone gripper,
- 4 front belt loops and 3 tunnels
- Two snap closure with brass zipper and two set-in back pockets
- Double stitched crotch and double knees
- Coverseamed back, rise, side and inseams
- Adult Standard inseam: 37" un-hemmed
 (Inseam must be specified: 24"-36")
- Youth Standard inseam: 33" un-hemmed
 (Inseam must be specified: 24"-32")
- Price includes the cost to hem length
- "R RUSSELL" back left hip

Options:

1/8" Braid down sides	\$6.00
1/2" Braid down sides	\$10.00
1" Braid down sides	\$12.00
Hemmed leg end	N/C
Hemmed leg bottom with elastic	N/C

Notes:

Adult Stock Pant versions: 33347MK – Relax fit
 Stock Jersey Hook-ups: 34347MK
 10% upcharge for 44

PRODUCT



Deluxe Relaxed Fit Pant

33347MK – 47 Cloth **\$81.00**
 -100% Nylon Stretch Double Knit

Sizes: 28-42 Oversize: 44-48

- 2 ½" deluxe elastic waistband with silicone gripper, 4 front belt loops, 3 tunnels
- Two snap closure with brass zipper and two set-in buttoned back pockets
- Full fit through hips, thigh and calf area
- Double stitched crotch and double knees
- Coverseamed back rise, side and inseams
- Standard inseam: 35" un-hemmed
 (Inseam must be specified: 26"-34")
- Price includes the cost to hem length
- "R RUSSELL" back left hip

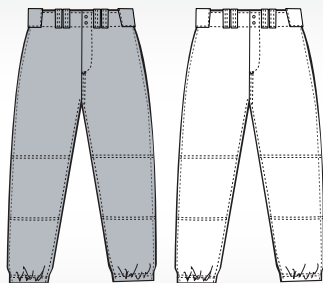
Options:

1/8" Braid down sides	\$6.00
1/2" Braid down sides	\$10.00
1" Braid down sides	\$12.00
Hemmed leg end	N/C
Hemmed leg bottom with elastic	N/C

NOTES:

Fuller cut pant
 10% Upcharge for oversize 44-48

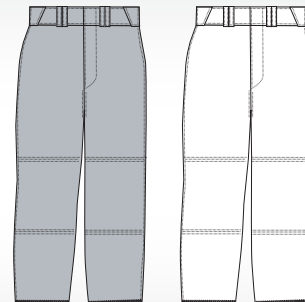
COLORS



BG7
Baseball Grey

WHI
White

COLORS



BG7
Baseball Grey

WHI
White

PRODUCT



Youth Engineered Pinstripe Game Pant

235ENBK – EN Cloth (Youth) **\$26.00**
 - 100% Polyester Engineered Pinstripe Warp Knit

Youth Sizes: S-XL

- Knitted-in zigzag pinstripe
- 2 1/2" deluxe elastic waistband with 4 front belt loops, single belt loops centered over 2 set-in back pockets and 3 tunnels
- Concealed two snap closure with brass zipper
- Double stitched crotch and double knees
- Coverseamed back rise and side seams
- Elastic leg hem
- Standard Inseam: Size S-25", M-26", L-27", XL-28"
- "R RUSSELL" back left hip

Options:

1/8" Braid down sides	\$6.00
1/2" Braid down sides	\$10.00
1" Braid down sides	\$12.00

PRODUCT



Rod Knit Boot Cut Game Pant

234RHMK – RH Cloth **\$37.00**
234RHBK – RH Cloth (Youth) **\$30.00**
 - 100% Polyester Stretch Double Knit (Heavyweight Rod Knit)

Adult Sizes: S-XXL Youth Sizes: S-XL

- 2 1/2" deluxe elastic waistband with 4 front belt loops, single belt loops centered over 2 set-in back pockets and 3 tunnels
- Concealed two snap closure with brass zipper
- Double stitched crotch and double knees
- Coverseamed back rise and side seams
- Hemmed boot cut
- Adult Standard Inseam: Size S-30", M-31", L-32", XL-33", XXL-34"
- Youth Standard Inseam: Size S-27", M-28", L-29", XL-30"
- "R RUSSELL" back left hip

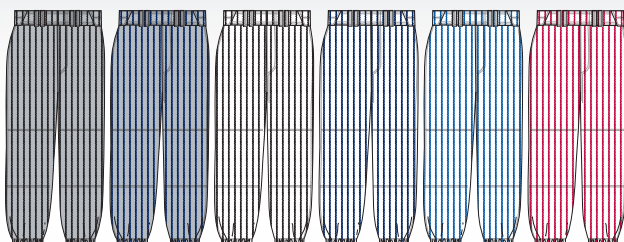
Options:

1/8" Braid down sides	\$6.00
1/2" Braid down sides	\$10.00
1" Braid down side	\$12.00

Notes:

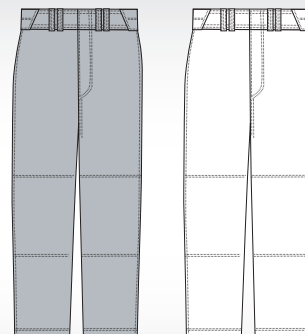
Boot Cut

COLORS



GBZ Baseball Grey/ Black	GNZ Baseball Grey/ Navy	WBZ White/Black	WNZ White/Navy	WRZ White/Royal	WZZ White/True Red
---------------------------------------	---	---------------------------	--------------------------	---------------------------	---------------------------------

COLORS



BG7 Baseball Grey	WHI White
-----------------------------	---------------------

PRODUCT



Adult / Youth Rod Knit Game Pant

235RHMK – RH Cloth	\$32.00
235RHBK – RH Cloth (Youth)	\$28.00
-100% Polyester Stretch Double Knit (Heavyweight Rod Knit)	

Adult Sizes: S-XXL Youth Sizes: S-XL

- 2 1/2" deluxe elastic waistband with 4 front belt loops, single belt loops centered over 2 set-in back pockets and 3 tunnels
- Concealed two snap closure with brass zipper
- Double stitched crotch and double knees
- Coverseamed back rise and side seams
- Elastic leg hem
- Adult Standard Inseam: Size S-28", M-29", L-30", XL-31", XXL-32"
- Youth Standard Inseam: Size S-25", M-26", L-27", XL-28"
- "R RUSSELL" back left hip

Options:

1/8" Braid down sides	\$6.00
1/2" Braid down sides	\$10.00
1" Braid down sides	\$12.00

PRODUCT



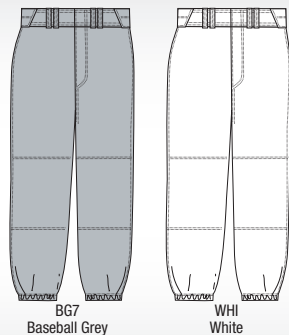
Adult / Youth Game Pant With Piping

236DBMP – DB Cloth	\$23.00
236DBBP – DB Cloth - Youth	\$20.00
- 100% Polyester Double Knit	

Adult Sizes: S-XXL Youth Sizes: XS-XL

- 2 1/2" deluxe elastic waistband with one set-in back pocket
- 2 front belt loops and 3 tunnels
- Two snap closure with brass zipper
- Double stitched crotch and double knees
- Cover seamed back rise
- Elastic leg hem
- 1/8" Piping down side seams
- Adult Standard Inseam: Size S-28", M-29", L-30", XL-31", XXL-32"
- Youth Standard Inseam: Size XS-24", S-25", M-26", L-27", XL-28"
- "R RUSSELL" back left hip

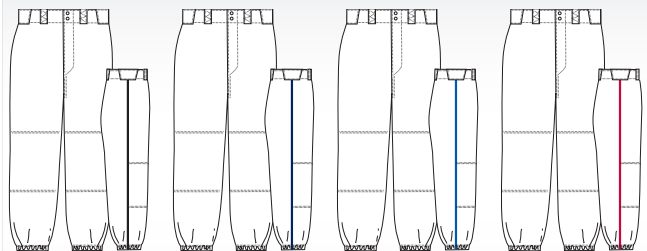
COLORS



BG7
Baseball Grey

WHI
White

COLORS



WBK
White/Black

WNA
White/Navy

WRO
White/Royal

WTR
White/True Red

PRODUCT



Baseball Game Pant

236DBMK – DB Cloth **\$22.00**
 236DBBK – DB Cloth – Youth **\$20.00**
 - 100% Polyester Double Knit

Adult Sizes: S-XXL
 Youth Sizes: XS-XL

- 2 ½" deluxe elastic waistband with one set-in back pocket
- 2 front belt loops and 3 tunnels
- Two snap closure with brass zipper
- Double stitched crotch and double knees
- Coverseamed back rise
- Elastic leg hem
- Adult Standard Inseam: Size S-28", M-29", L-30", XL-31", XXL-32"
- Youth Standard Inseam: Size XS-24", S-25", M-26", L-27", XL-28"
- "R RUSSELL" back left hip

Options:

1/8" Braid down sides	\$6.00
1/2" Braid down sides	\$10.00
1" Braid down sides	\$12.00

PRODUCT



Youth Pull On Pant

237DBBK- DB Cloth **\$11.00**
 - 100% Polyester Double Knit

Youth Size: XS-XL Oversize: XXL

- Multi-needle elastic waist with drawcord
- One set-in back pocket
- Double knees
- Elastic leg hem
- Standard Inseam – 18 ¼"
- "R RUSSELL" back left hip

Options:

Not available

Notes:

Adult version not available
 10% upcharge for XXL

COLORS



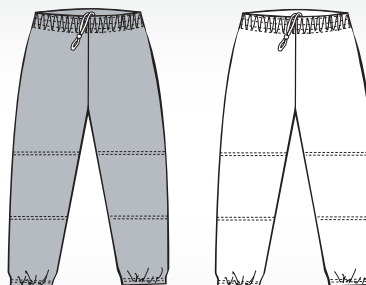
BG7
Baseball Grey

BLK
Black

NAV
Navy

WHI
White

COLORS



BG7
Baseball Grey

WHI
White

PRODUCT

NEW



Short Sleeve Batting Practice Pullover

873QXMK- QX Cloth **\$45.00**
-100% Polyester

Adult Sizes: S-2XL Oversize: 3XL

- Dri-Power® moisture wicking fabric
- Full cut body with quarter zip neck
- Body and upper sleeves (100% Polyester with mechanical stretch)
- Lower sleeve inserts, back inserts, and sleeve end (100% Polyester mesh with mechanical stretch)
- Waist has shock cord with cord lock on wearers left
- 4 side sew label lower left front
- "R RUSSELL" center back neck

Decoration Type:

Screen Print/Embroidery/Twill

Decoration Placements:

1, 3, 7, 7C, 8, 9, 10, 11, 32, 35, 36, BN

PRODUCT

NEW



Long Sleeve Batting Practice Pullover

875QXMK- QX Cloth **\$50.00**
-100% Polyester

Adult Sizes: S-XXL Oversize: 3XL

- Dri-Power® moisture wicking fabric
- Full cut body with quarter zip neck
- Body and sleeves, 100% Polyester with mechanical stretch
- Underarm inserts, upper back inserts, and sleeve binding (100% Polyester with mechanical stretch)
- Waist has shock cord with cord lock on wearers left
- 4 side sew label lower left front
- "R RUSSELL" center back neck

Decoration Type:

Screen Print/Embroidery/Twill

Decoration Placements:

1, 3, 6, 7, 7C, 8, 9, 10, 11, 32, 35, 36, BN

COLORS



B9A Black/Baseball Grey	C9A Cardinal/ Baseball Grey	D9B Dark Green/ Baseball Grey	M9B Maroon/ Baseball Grey
--------------------------------------	--	--	--



N9B Navy/Baseball Grey	P9B Purple/ Baseball Grey	R9B Royal/Baseball Grey	T9B True Red/ Baseball Grey
-------------------------------------	--	--------------------------------------	--

COLORS



B9A Black/ Baseball Grey	C9A Cardinal/ Baseball Grey	D9B Dark Green/ Baseball Grey	M9B Maroon/ Baseball Grey
--	---	---	---



N9B Navy/ Baseball Grey	P9B Purple/ Baseball Grey	R9B Royal/ Baseball Grey	T9B True Red/ Baseball Grey
---	---	--	---

PRODUCT



Pullover Crew

811MEMK – ME Cloth **\$40.00**
 -100% Polyester Micro Polar Fleece

Adult Sizes: S-XXL Oversize: 3XL-4XL

- Athletic cut pullover crew
- Raglan sleeves
- 1/8" contrast start and stop piping at front and back raglan seams
- Contrasting side panels
- Stretch binding at neck, cuff and bottom band
- Curved hemmed bottom
- "R RUSSELL" Center back neck

Decoration Type:
 Embroidery/Twill

Decoration Placements:
 6, 7, 7C, 8, 9, 9C, 9N, BN

PRODUCT



Baseball Jacket

814LRMK – LR Cloth **\$78.00**
 -100% Texturized Nylon Polyester Fill Lining

Sizes: S-XXL Oversize: 3XL

- Water resistant
- Full snap front (covered metal snaps)
- Polyester fill diamond quilted lining
- Raglan sleeves
- 1/8" contrast start / stop piping at front & back seams
- Contrasting side panels
- Solid rib knit collar, cuff and bottom band
- Single welt front pockets
- "R RUSSELL" Center back neck

Decoration Type:
 Embroidery/Twill

Decoration Placements:
 3, 6, 7, 8, 9, 10, BN

COLORS



COLORS



PRODUCT



Adjustable Baseball Belt

BBBELTA (Adult)	\$6.50
BBBELTY (Youth)	\$6.50

Sizes: OSFA; Adjustable 32"-46" (Adult)
 Sizes: OSFA; Adjustable 18"-32" (Youth)

- 1 ½" Wide elastic belt
- Metal adjustable slide
- Metal buckle
- Coated split leather tab
- "R RUSSELL" embossed on tab

Notes:

Replaces the BBBELT0
 Reduced width for a better fit on youth baseball pants

COLORS



"R" Russell logo color is tonal



BIKE® Adult/Youth Hard Shell Batting Glove

BABG90 - Adult \$40.00
 BYBG90 - Youth (Inventory Only) \$40.00

SIZES: Adult (S-XXL); Youth (S-L)
 COLOR CODE: BLK

- Provides protection after hand injury
- 40% Premium Goatskin Leather Palm
- 45% PU plastic covering for knuckle protection
- 9% Synthetic rubber for added padding for top of hand
- 6% Polyester spandex used between fingers for flexibility
- Opposite closure for better secured fit
- Dual layer padding in palm to reduce vibration



BIKE® Adult/Youth Batter's Elbow Guard

BABE50R - Adult (Left-Handed Batter) \$25.00
 BABE50L - Adult (Right-Handed Batter) \$25.00
 BYBE50R - Youth (Left-Handed Batter) \$25.00
 BYBE50L - Youth (Right-Handed Batter) \$25.00

- Outer covering: 90% nylon; 10% polyester
 - Backing: 100% polyester covers PE plastic and foam

Sizes: Adult (NS); Teen (NS)
 Color Code: BLK

- Provides protection to the elbow against impact
- Overall length - Adult : 10" / Youth: 9"
- Offers flexibility / comfort with three segmented padding



BIKE® Adult Batter's Leg Guard

BALG50 - Adult \$ 21.00

SIZES: Adult (NS)
 COLOR CODE: BLK

- For use for protection against foul balls off leg
- Segmented hard shell PVC inserts with foam
- Length 12" with toe cap attached
- Removable toe cap
- Two elastic straps with D-ring attachments



BIKE® Hot / Cold Shoulder Wrap

BASW50 – Adult \$52.00

Sizes: Adult (NS) Color Code: BLK

- Ventilated neoprene with moleskin pockets
- 2-gel packs included
- Adjustable hook and loop closure for proper fit
- Universal fitting for right or left shoulder
- Designed for repeated use; doesn't alter effectiveness

BIKE® 2-Pack Replacement Hot / Cold Gel Packs

BAGP10 – Adult \$12.00

Sizes: Adult (NS) Color Code: CLR

- 2-Gel pack replacements for BASW50
- Always read and follow all instructions and warnings before use



BIKE® MULTI-PURPOSE HOT/COLD WRAP

BAMW10 – Adult \$30.00

Sizes: Adult (NS)
 Color Code: BLK

- Sized to be used for several areas of the, body, neck, back, thigh, ankle, wrist, etc.
- Pocketed sleeve with hook and loop closure that houses 1 gel pack
- When icing, place in freezer for 2 hours before use
- Heat in 30 second intervals in 600 watt microwave for desired temperature
- Always read and follow all instructions and warnings before use



RUSSELL ATHLETIC® 3-WHEELED GEAR BAG

RAJW50 - Adult \$ 120.00

SIZES: Adult (NS)
 COLOR CODE: BLK

- Dimensions: 36" x 16" x 16"
- 600 Denier polyester
- Extra-large zippered main compartment for storing all your essentials
- Side zippered compartment
- Two sturdy web handles with three wheeled construction and pull handle at top end for ease of transporting

SIZES

ADULT GLOVE SIZING	S	M	L	XL	XXL
BABG90	6-7"	8-9"	10-11"	12-13"	14-15"

YOUTH GLOVE SIZING	S	M	L
BYBG90	3-4"	4-5"	6-7"