



FLEECE

PRODUCT



 Logo on back neck

Dri-POWER

Tech Fleece Crew

852EFM1 - EF Cloth **\$43.00**

- 100% Polyester
- Natural Stretch & Quick Dry

Sizes: S-2XL Oversize: 3XL

- Moisture wicking fabric
- Athletic cut
- Self-material collar with 3-needle cover stitch
- Mesh back neck tape
- Contrast mesh locker patch
- Raglan sleeves with 3-needle cover stitch
- Self-material cuffs and bottom band with 3-needle cover stitch
- Side entry pockets
- "R RUSSELL" logo centered at outer back neck

Decoration Type:

Embroidery, Screen Print, Twill

Decoration Placements:

6, 7, 7C, 8, 9, BN

PRODUCT



Dri-POWER

Tech Fleece Pullover Hood

854EFM0 - EF Cloth **\$47.00**

- 100% Polyester

Sizes: S-2XL Oversize: 3XL-4XL

- Moisture wicking fabric
- Natural stretch & quick dry
- Self-material outer hood with three-needle coverstitch
- Draw cord with "RUSSELL" logo tipped ends
- Contrast hood liner
- Back neck tape
- Raglan sleeves with three-needle coverstitch
- Muff front pocket
- Self-material cuffs / bottom band with three-needle coverstitch
- "R RUSSELL" logo at lower left muff pocket

Decoration Type:

Screen Print, Embroidery, Twill

Decoration Placements:

17, 18, 62, BU

COLORS



BLK
Black

CGS
Cardinal/
Greystone

NAV
Navy



STE
Steel

TRR
True Red

COLORS



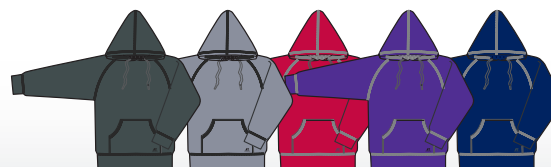
BLK
Black/Steel

ADS
Cardinal/
Stealth

DGK
Dark Green/
Black

BBA
Maroon/Steel

RYS
Royal/Steel



HKS
Stealth/Black

STE
Steel/Black

TRR
True Red/Steel

BBB
Purple/Steel

NAV
Navy

TECH FLEECE

PRODUCT



NEW

Tech Fleece Oversized Hood

855EFM0 – EF Cloth **\$50.00**
-100% Polyester
- Natural stretch & quick dry

Sizes: S-2XL Oversize: 3XL-4XL

- Moisture wicking fabric
- Draw cord with "RUSSELL" logo tipped ends
- Contrast hood liner
- Contrast piping on sleeve, armhole and back
- Back neck tape
- Muff front pocket
- Self-material cuffs / bottom band three-needle coverstitch
- "R RUSSELL" logo at lower left muff pocket

Decoration Type:
Screen Print, Embroidery, Twill

Decoration Placements:
17, 18, 62, BU

PRODUCT



NEW

Tech Fleece 1/4 Zip Jacket

8TPEFM1 - EF Cloth **\$40.00**
-100% Polyester
- Natural stretch & quick dry

Sizes: S-2XL Oversize: 3XL

- Moisture wicking fabric
- Self-material cadet collar
- Contrast sleeve and body inserts
- Contrast overlays on sleeves
- 1/4 front center zipper
- Raglan sleeves
- Stretch binding on thumbholes and sleeve ends
- Three-needle coverstitched armholes
- Straight hemmed bottom
- "R RUSSELL" logo on left sleeve end

Decoration Type:
Screen Print, Embroidery, Twill

Decoration Placements:
17, 18, 62, BU

COLORS



BCS Black/Steel ADS Cardinal/Stealth NAW Navy/White SEK Steel/Black TUS True Red/Steel

COLORS



BCS Black/Steel ADS Cardinal/Stealth

NAW Navy/White OPS Steel/Stealth TUS True Red/Steel

PRODUCT



Dri-POWER

Tech Fleece 1/4 Zip Hood

FT2EFM0 - EF Cloth **\$50.00**
- 100% Polyester

Sizes: S-2XL Oversize: 3XL

- Moisture wicking fabric
- Athletic cut
- Six piece two-ply hood
- Raglan sleeves with 3-needle coverstitch with contrast
- Upper sleeve insert
- Muff pocket with contrast piping
- "R RUSSELL" logo embroidered on left sleeve

Decoration Type:

Screen Print, Embroidery, Twill

Decoration Placements:

6, 7, 8, 9

PRODUCT



Dri-POWER

Tech Fleece Full Zip Jacket

8TJEFM0 - EF Cloth **\$42.00**
- 100% Polyester

Sizes: S-3XL

- Moisture wicking fabric
- Natural stretch & quick dry
- Self-material cadet collar
- Contrast inner collar and back neck tape
- Full front center zipper
- Contrast collar, sleeve, body inserts & piping
- Set-in sleeves & welt pockets
- Self-material cuffs
- Three-needle coverstitched armholes, & cuffs
- Straight hemmed bottom
- "R RUSSELL" logo at lower left front

Decoration Type:

Screen Print, Embroidery, Twill

Decoration Placements:

17, 18,62,BU

COLORS



SSP Stealth/Black/Black BBC Cardinal/Black/Stealth NIL Navy/White/Steel



BBI Royal/Steel/Steel BBD True Red/Steel/Steel 9D3 White/Black/Black

COLORS



BCS Black/Steel ADS Cardinal/Stealth DNS Dark Green/Steel BBA Maroon/Steel NAW Navy/White



BBB Purple/Steel RYS Royal/Steel OPS Steel/Stealth TUS True Red/Steel

TECH FLEECE

PRODUCT

INSEAM:
 S 29" XXL 33"
 M 30" 3XL 34"
 L 31" 4XL 35"
 XL 32"



Dri-POWER

Tech Fleece Pant

838EFM1 - EF Cloth **\$39.50**
 -100% Polyester

Sizes: S-4XL

- Moisture wicking fabric
- Natural stretch & quick dry
- Multi-needle covered elastic waist
- Inside draw cord with "RUSSELL" logo tipped ends
- Side entry pockets
- Back zippered pocket on right hip
- Three-needle coverstitch hemmed leg openings
- Zipper in leg openings
- "R RUSSELL" on right hip

Decoration Type:

Screen Print, Embroidery, Twill

Decoration Placements:

17, 18,62,BU

COLORS



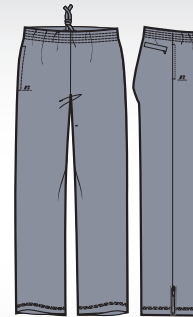
BLK
Black



NAV
Navy



SHL
Stealth



STE
Steel

PRODUCT



NEW

Women's Tech Fleece Full Zip Cadet

FS7EFX0 - EF Fabric
-100% Polyester

\$56.00

Sizes: S-2XL

- Dri-Power® moisture wicking fabric
- Pointelle fleece neck tape, front / back inserts & collar liner
- Invisible zipper pockets in front panel seam
- Drop tail design at back hem
- Logo on outer back neck

Decoration Type:
Embroidery, Screen Print

Decoration Placements:
8, 9, BN

PRODUCT



Women's Tech Fleece Mid Rise Loose Fit Pant

FS5EFX0 - EF Cloth

\$38.50

Sizes: S-2XL

- Dri-Power® moisture wicking fabric
- Loose fit pant
- Flattering no roll waistband
- Logo on right hip

Decoration Type:
Embroidery, Screen Print

Decoration Placements:
17, 18, BL

COLORS



SHL Stealth/Stealth BLK Black/Black BKS Black/Watermelon Pink CDS Cardinal/Steel DNS Dark Green/Steel



NAV Navy/Navy BL2 Stealth/True Red RYS Royal/Steel WHI White/White

COLORS



BLK Black NAV Navy SHL Stealth STE Steel WHI White

WOMEN'S TECH FLEECE

PRODUCT

NEW



Youth Tech Fleece Pullover Hood

955EFB0 – EF Cloth **\$40.00**
-100% Polyester

Sizes: S-XL

- Moisture wicking fabric
- Natural stretch & quick dry
- Contrast hood liner
- Contrast piping on sleeve ,armhole and back
- Back neck tape
- Muff front pocket
- Self-material cuffs & bottom band w/ three-needle coverstitch
- "R RUSSELL" logo at lower left muff pocket

Decoration Type:
Screen Print, Embroidery, Twill

Decoration Placements:
17, 18,62,BU

PRODUCT

NEW



Youth Tech Fleece Pant

938EFB0 – EF Cloth **\$36.00**
-100% Polyester

Sizes: S-XL

- Moisture wicking fabric
- Natural stretch & quick dry
- Multi-needle covered elastic waist
- Side entry pockets
- Three-needle coverstitch hemmed leg openings
- "R RUSSELL" on right hip

Decoration Type:
Screen Print, Embroidery, Twill

Decoration Placements:
17, 18, 62, BU

COLORS



BCS Black/Steel ADS Cardinal/Steath NAW Navy/White SEK Steel/Black TUS True Red/Steel

COLORS



NAW Navy/White BCS Black/Steel HKS Steath/Black

PRODUCT



Dri-POWER

Dri-Power® Fleece Crew

698HBM1 – HB Cloth **\$19.80**

- Colors: 50% Cotton/50% Polyester
- Oxford: 52% Polyester/48% Cotton
- Black Heather: 50% Cotton/50% Polyester
- Vintage True Navy: 50% cotton/50% Polyester

Sizes: S-2XL Oversize: 3XL-4XL

- Dri-Power® moisture wicking fabric
- Rib crewneck collar with V-patch
- Oxford color jersey shoulder to shoulder tape
- Self-material side inserts
- Set-in sleeves
- Rib knit cuffs and waistband
- Coverseamed neck, armholes, waistband and insert
- "R" logo tab at waistband

Decoration Type:

Screen Print, Embroidery, Twill

Decoration Placements:

17, 18, 62, BU

PRODUCT



Dri-POWER

Dri-Power® Fleece Pullover Hood

695HBM1 – HB Cloth **\$27.40**

- Colors: 50% Cotton/50% Polyester; Oxford
- 52% Polyester/48% Cotton; Black Heather
- 50% Cotton/50% Polyester; Vintage True Navy
- 50% Cotton/50% Polyester

Sizes: S-2XL Oversize: 3XL-4XL

- Dri-Power® moisture wicking fabric
- Two-ply hood with grommets and matching draw cord
- Oxford color jersey shoulder to shoulder tape
- Rib V-patch at center front
- Self-material side inserts
- Set-in sleeves
- Rib knit cuffs and waistband
- Muff pocket
- Coverseamed neck, armholes, waistband and insert
- "R" logo tab at waistband

Decoration Type:

Screen Print, Embroidery, Twill

Decoration Placements:

17, 18, 62, BU

COLORS



951 Ash BLK Black BOR Burnt Orange CRD Cardinal CBU Columbia Blue DGR Dark Green GAT GT Gold GLD Gold GW8 Black Heather



MAR Maroon QZB Navy OXF Oxford PUR Purple ROY Royal TXO Texas Orange* TRR True Red WHI White

* TXO Inventory Only

COLORS



BLK Black 951 Ash BOR Burnt Orange CRD Cardinal CBU Columbia Blue DGR Dark Green GAT GT Gold GLD Gold GW8 Black Heather



KEL Kelly MAR Maroon QZB Navy OXF Oxford PUR Purple ROY Royal TXO Texas Orange TRR True Red CO3 Watermelon Pink WHI White

BASIC FLEECE

PRODUCT

NEW



Dri-Power® Fleece Color Block Hood

694HBM0 - HB Cloth \$30.00

- Colors: 50% Cotton/50% Polyester
- Oxford: 52% Polyester/48% Cotton
- Black Heather: 50% Cotton/50% Polyester

Sizes: S-2XL Oversize: 3XL

- Dri-Power® moisture wicking fabric
- Two-ply hood with grommets and matching draw cord
- Oxford color jersey shoulder to shoulder tape
- Self-material contrasting front and back inserts
- Raglan sleeves
- Rib knit cuffs and waistband
- Muff pocket
- Cover seamed neck, armholes, waistband and insert
- "R" logo tab at waistband

Decoration Type:

Screen Print, Embroidery, Twill

Decoration Placements:

3, 7

PRODUCT



Dri-POWER

Dri-Power® Fleece 1/4 Zip Cadet

6Z4HBM0 - HB Cloth \$30.00

- 50% Cotton/50% Polyester
- Oxford: 52% Polyester/48% Cotton
- Black Heather: 50% Cotton/50% Polyester

Sizes: S-2XL Oversize: 3XL

- Dri-Power® moisture wicking fabric
- Contrast jersey shoulder to shoulder tape
- 1/4 zip front
- Set-in sleeves
- Self-fabric side inserts
- Side entry pockets
- Rib knit cuffs
- Open bottom waistband
- "R" logo tab bottom left panel seam

Decoration Type:

Screen Print, Embroidery, Twill

Decoration Placements:

17, 18, 62, BU

COLORS



LCK
Black/Black Heather

NAO
Navy/Oxford

TXF
True Red/
Oxford

XBH
Oxford/
Black Heather

COLORS



BLK
Black

HBO
Black Heather

QZB
Navy

OXF
Oxford

WHI
White

PRODUCT



Dri-POWER

Dri-Power® Fleece Full Zip Hood

697HBM1 – HB Cloth \$32.00

- Colors: 50% Cotton/50% Polyester
- Oxford: 52% Polyester/48% Cotton
- Black Heather: 50% Cotton/50% Polyester

Sizes: S-2XL Oversize: 3XL

- Dri-Power® moisture wicking fabric
- Two-ply hood with grommets and matching draw cord
- Oxford color jersey shoulder to shoulder tape
- Full front center zipper
- Self-material side inserts
- Set-in sleeves
- Rib knit cuffs and waistband
- Muff pocket
- Coverseamed neck, armholes, waistband and insert
- "R" logo tab at waistband

Decoration Type:

Embroidery, Screen Print, Twill

Decoration Placements:

6, 7 (Twill Only), 8

PRODUCT



Dri-POWER

INSEAM:

S 29½	XXL 33½
M 30½	3XL 33½
L 31½	4XL 34
XL 32½	

Dri-Power® Closed-Bottom Fleece Pocket Pant

029HBM0 – HB Cloth \$24.70

- Colors: 50% Cotton/50% Polyester
- Oxford: 52% Polyester/48% Cotton
- Black Heather: 50% Cotton/50% Polyester
- Vintage True Navy Heather: 50% Cotton/50% Polyester

Sizes: S-4XL

- Dri-Power® moisture wicking fabric
- Multi-needle covered elastic waistband with inside drawcord
- Side entry pockets
- Elastic hem leg bottoms
- "R RUSSELL" on right hip

Decoration Type:

Embroidery, Screen Print, Twill

Decoration Placements:

17, 18, 21, 22

COLORS



BLK Black CRD Cardinal QZB Navy OXF Oxford WHI White

COLORS



BLK Black GW8 Black Heather QZB Navy OXF Oxford WHI White

BASIC FLEECE

PRODUCT



INSEAM:
 S 30 XL 33
 M 31 XXL 34
 L 32 3XL 35
 4XL 36

Dri-POWER

Dri-Power® Open-Bottom Fleece Pocket Pant

596HBM0 - HB Cloth \$24.70

- Colors: 50% Cotton/50% Polyester
- Oxford: 52% Polyester/48% Cotton
- Black Heather: 50% Cotton/50% Polyester

Sizes: S-2XL Oversize: 3XL - 4XL

- Dri-Power® moisture wicking fabric
- Multi-needle covered elastic waistband with inside drawcord
- Side entry pockets
- Two-needle hemmed leg opening
- "R RUSSELL" on right hip

Decoration Type:

Screen Print, Embroidery, Twill

Decoration Placements:

17, 18,62,BU

PRODUCT



ADULT INSEAM:
 S 29½
 M 30½
 L 31½
 XL 32½
 XXL 33½
 3XL 33½
 4XL 34

Dri-POWER

Dri-Power® Closed-Bottom Fleece Pant

696HBM0 – HB Cloth \$19.80

- Colors: 50% Cotton/50% Polyester
- Oxford: 52% Polyester/48% Cotton
- Black Heather: 50% Cotton/50% Polyester

Sizes: S-2XL Oversize: 3XL-4XL

- Dri-Power® moisture wicking fabric
- Two-needle tunnel elastic waistband with inside drawcord
- Elastic hem leg bottoms

Decoration Type:

Embroidery, Screen Print, Twill

Decoration Placements:

17, 18, 22, 24, 43, 44, BU

COLORS



BLK Black DGR Dark Green MAR Maroon QZB Navy OXF Oxford ROY Royal TRR True Red

COLORS



BLK Black BOR Burnt Orange CRD Cardinal DGR Dark Green MAR Maroon QZB Navy OXF Oxford PUR Purple ROY Royal TXO Texas Orange TRR True Red

PRODUCT

NEW



Women's Pro-Cotton® Fleece Pullover Hood

WC3KBX1 - KB Cloth **\$34.00**
 - 80% Cotton/20% Polyester
 - Heathers: 65% Cotton/35% Polyester
 - Black Heather: 50% Cotton/50% Polyester

Sizes: S-2XL

- 1x1 rib trim
- Muffed pocket
- Traditional styling
- Contrasting neck tape concealing neck seam
- Self-material side inserts
- Three-needle stitch detail
- Logo left sleeve end

Decoration Type:
 Screen Print, Embroidery, Twill

Decoration Placements:
 17, 18, 62, BU

PRODUCT

NEW



Women's Pro-Cotton® Fleece Midrise Pant

WC5KBX1 - KB Cloth **\$30.00**
 - 80% Cotton/20% Polyester
 - Heathers: 65% Cotton/35% Polyester
 - Black Heather: 50% Cotton/50% Polyester

Sizes: S-2XL

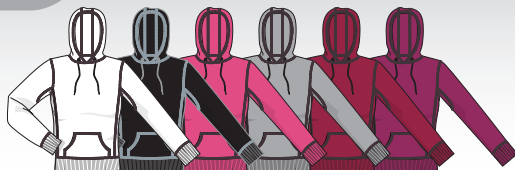
- 1x1 rib trim
- Traditional styling
- Rib trim waistband with inner drawcord
- Side entry pockets
- Three-needle stitch detail
- Logo at right hip

Decoration Type:
 Screen Print, Embroidery, Twill

Decoration Placements:
 17, 18, 62, BU

WOMEN'S BASIC FLEECE

COLORS



KBF White BWB Black DJD Watermelon Pink KCA Oxford BWL Cardinal DJB Maroon



BW9 Navy DGR Dark Green PUR Purple ROY Royal DJC True Red

COLORS



KDA Oxford UT2 Black UV2 Navy 309 White

PRODUCT

NEW



Youth Dri-Power® Fleece Crew

998HBB1 – HB Cloth \$15.00

- Colors: 50% Cotton/50% Polyester
- Oxford: 52% Polyester/48% Cotton
- Black Heather: 50% Cotton/50% Polyester

Sizes: S-XL

- Dri-Power® moisture management fabric
- Rib crewneck collar with V-patch
- Oxford color jersey shoulder to shoulder tape
- Self-material side inserts
- Set-in sleeves
- Rib knit cuffs and waistband
- Coverseamed neck, armholes and waistband
- "RUSSELL" logo tab at waistband

Decoration Type:
Screen Print, Embroidery, Twill

Decoration Placements:
6, 7, 7C, 8, 9, BN

PRODUCT

NEW



Youth Dri-Power® Fleece Pullover Hood

995HBB1 - HB Cloth \$21.00

- Colors: 50% Cotton/50% Polyester
- Oxford: 52% Polyester/48% Cotton
- Black Heather: 50% Cotton/50% Polyester

Sizes: S-XL

- Dri-Power® moisture wicking fabric
- Two-ply hood
- Oxford color jersey shoulder to shoulder tape
- Rib V-patch at center front
- Self-material front and back side inserts
- Set-in sleeves
- Rib knit cuffs and waistband
- Muff pocket
- Coverseamed neck, armholes, and waistband
- "RUSSELL" logo tab at waistband

Decoration Type:
Screen Print, Embroidery, Twill

Decoration Placements:
17, 18, 62, BU

COLORS



BLK Black CRD Cardinal DGR Dark Green GW8 Black Heather MAR Maroon QZB Navy

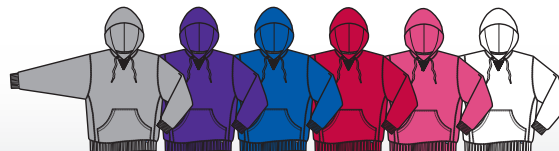


OXF Oxford PUR Purple ROY Royal TRR True Red WHI White

COLORS



BLK Black CRD Cardinal DGR Dark Green GAT GT Gold GW8 Black Heather MAR Maroon QZB Navy



OXF Oxford PUR Purple ROY Royal TRR True Red C03 Watermelon Pink WHI White

PRODUCT



NEW

Youth Dri-Power® Fleece Full Zip Hood

997HBB1 – HB Cloth \$27.00

- Colors: 50% Cotton/50% Polyester
- Oxford: 52% Polyester/48% Cotton
- Black Heather: 50% Cotton/50% Polyester

Sizes: S-XL

- Dri-Power® moisture wicking fabric
- Two-ply hood with grommets and matching draw cord
- Oxford color jersey shoulder to shoulder tape
- Full front center zipper
- Self-material side inserts
- Set-in sleeves
- Muff pocket
- Rib knit cuffs and waistband
- Coverseamed neck, armholes, waistband and insert
- "R RUSSELL" logo tab at waistband

Decoration Type:

Screen Print, Embroidery, Twill

Decoration Placements:

17, 18, 62,BU

PRODUCT



NEW

Youth Dri-Power® Fleece Closed-Bottom Pant

029HBB1 – HB Cloth \$17.00

- Colors: 50% Cotton/50% Polyester
- Oxford: 52% Polyester/48% Cotton
- Black Heather : 50% Cotton/50% Polyester

Sizes: S-XL

- Dri-Power® moisture wicking fabric
- Mult-needle covered elastic waistband with inside drawcord
- Side entry pockets
- Elastic hem leg openings
- "R Russell" on right hip

Decoration Type:

Embroidery, Screen Print, Twill

Decoration Placements:

17, 18, 21, 22

COLORS



BLK
Black

OXF
Oxford

COLORS



BLK
Black

OZB
Navy

OXF
Oxford

YOUTH BASIC FLEECE

NEW



**Youth Dri-Power® Fleece
Open-Bottom Pant**

596HBB1 - HB Cloth

\$15.00

- Colors: 50% Cotton/50% Polyester
- Oxford: 52% Polyester/48% Cotton
- Black Heather: 50% Cotton/50% Polyester

Sizes: S-XL

- Dri-Power® moisture wicking fabric
- Multi-needle covered elastic waistband with inside drawcord
- Side entry pockets
- Two-needle hemmed leg opening
- Graded inseams:
- "R RUSSELL" on right hip

Decoration Type:

Embroidery, Screen Print, Twill

Decoration Placements:

18, 21, 22, 24, 43, 44, BU

Dri-POWER®

COLORS



BLK
Black

CRD
Cardina

DGR
Dark
Green

MAR
Maroon

OZB
Navy

OXF
Oxford

ROY
Royal

WHI
White

TRR
True
Red

At Once Delivery on all Socks
All Socks Sold in Increments of 12 (dozens)

All styles are Inventory Only

Size	Sock Size	Shoe Size
XS		4 & below
S	8-11	4-10
M	10-13	6-12
L	13-15	12-16
XL		15 & above



CREW \$52.50 dz.
Duraspun™/Nylon/Polypropylene/Lycra® Spandex
RTS100U: 8-11, RTS101U: 10-13, RTS102U: 13-16
Sold by the dozen
Colors: Black 11, White 34



COTTON CREW \$30.50 dz.
Cotton/Nylon/Lycra®
RTS600U: 8-11, RTS601U: 10-13, RTS602U: 13-16
Sold by the dozen



QUARTER \$43.50 dz.
Duraspun™/Nylon/Polypropylene/Lycra® Spandex
(white) RTS200U: 8-11, RTS201U: 10-13, RTS202U: 13-16
Sold by the dozen
Colors: Black 11, White 34



COTTON QUARTER \$25.00 dz.
Cotton/Nylon/Lycra®
RTS700U: 8-11, RTS701U: 10-13, RTS702U: 13-16
Sold by the dozen



NO-SHOW \$40.00 dz.
Duraspun™/Nylon/Polypropylene/Lycra® Spandex
RTS500U: 8-11, RTS501U: 10-13, RTS502U: 13-16
Sold by the dozen



COTTON TUBE \$36.50 dz.
Cotton/Nylon/Lycra®
RTS900U: 8-13, RTS901U: 10-16
Sold by the dozen



COTTON NO-SHOW \$23.50 dz.
Cotton/Nylon/Lycra®
RTS800U: 8-11, RTS801U: 10-13, RTS802U: 13-16
Sold by the dozen



- BLK
Black
- BOR
Burnt Orange
- CRD
Cardinal
- CBU
Columbia Blue
- DGR
Dark Green
- GLD
Gold
- KEL
Kelly
- MAQ
Marlin Aqua
- MAR
Maroon
- NAV
Navy
- PUR
Purple
- TRR
True Red
- VGD
Vegas Gold
- WHI
White

ALL SPORT SOCK . . . \$44.00 dz.
Cotton/Nylon/Lycra®
RTS00AS: XS (4 & under) S (6-9) M (10-13) L (13-16)
Solid colored, Sold by the dozen



RTSDGS1 DELUXE GAME SOCK . . . \$78.00 dz.
Acrylic/Nylon/Lycra® Deluxe Game Sock
Sizes M(10-13), L(13-15), XL(15+)
Sold by the dozen
Colors:
WBK White/Black
WHQ White/Burnt Orange
WCA White/Cardinal
WDG White/Dark Green
WGL White/Gold
WKG White/Kelly
WHM White/Maroon
WNA White/Navy
WPU White/Purple
WRO White/Royal
WTR White/True Red
WHI White