

PRODUCT



Adult Faux Placket Pullover Jersey

336VTMK - VT Cloth **\$55.00**
 336VTBK - VT Cloth (Youth) **\$48.00**
 -92% Nylon/8% Spandex - Color
 -92% Polyester/8% Spandex - White

Adult Sizes: M-XXL Oversize: 3XL Youth Sizes: M-XL

- Faux placket pullover jersey with set-in sleeves
- Contrast self-material inserts
- Curved hemmed bottom
- 1/8" Contrasting piping at neck, placket edge and shoulders
- 4 Side sew label lower left front
- "R RUSSELL" center back neck

Options:
Not Available

Decoration Type:
Screen Print/Embroidery/Twill

Decoration Placements:

3, 6, 7N*, 8, 9, 10, 11, 32, 35
 Screen Print not available on placement #7N

NOTES:

Stock Pant Hook-up, 33147M0 and 33347MK
 Custom version 336VTCS
 10% Up charge for 3XL
 Faux placket pullover jersey – sewn placket allows for cleaner twill decoration by eliminating gapping between buttons.
 *PL# 7N – REQUIRES NEW ART – No pattern on hand will be accepted. A new pattern charge will be applied.

PRODUCT



Adult Button Front Game Jersey

34347MK - 47 Cloth **\$50.00**
 - 100% Nylon Stretch Double Knit

Sizes: M-XXL Oversize: 3XL

- Full button front with raglan sleeve
- Curved hemmed bottom with extended tail
- 4 Side sew label lower left front
- "R RUSSELL" center back neck

Options:

1/8" Braid around neck and down front	\$12.00
1/2" Braid around neck and down front	\$13.00
1/8" Braid 1" up from sleeve end	\$8.00
1/2" Braid 1" up from sleeve end	\$9.00
1/2" Braid on sleeve end	\$9.00
1" Braid on sleeve end	\$10.00
1/2" Braid on neck edge	\$10.00

Decoration Type:

Screen Print/Embroidery/Twill

Decoration Placements:

1, 3, 6, 6L, 7, 8, 9, 10, 11, 32, 35,
 BN (*Screen Print not available on placement #7)

Notes:

Stock Pant Hook-up 33147M0 & 33347MK
 10% upcharge for 3XL

COLORS



COLORS



PRODUCT



Adult Stretch Performance Button Front Jersey

343PMMK - PM Cloth **\$46.00**
 343PMBK - PM Cloth (Youth) **\$40.00**
 -92% Nylon/8% Spandex - Colors
 -92% Polyester/8% Spandex - White

Adult Sizes: M-XXL Oversize: 3XL Youth Sizes: M-XL

- Performance Mesh with Dri-Power® moisture wicking fabric
- Raglan sleeve and coverseamed armholes
- Curved hemmed bottom with extended tail
- 4 Side sew label lower left front
- "R RUSSELL" center back neck

Options:

1/8" Braid around neck and down front	\$12.00
1/2" Braid around neck and down front	\$13.00
1/8" Braid 1" up from sleeve ends	\$8.00
1/2" Braid 1" up from sleeve end	\$9.00
1/2" Braid on sleeve end	\$9.00
1" Braid on sleeve end	\$10.00
1/2" Braid around neck edge	\$10.00

Decoration Type:

Screen Print/Embroidery/Twill

Decoration Placements:

1, 3, 6, 6L, 7, 8, 9, 10, 11, 32, 35, N4, BN
 Screen Print not available on placement 7

Notes:

10% upcharge for 3XL

PRODUCT



Adult Stretch Performance Mesh Sleeveless Jersey

312PMMK - PM Cloth **\$42.00**
 -92% Nylon/8% Spandex - Colors
 -92% Polyester/8% Spandex - White

Sizes: M-XXL Oversize: 3XL

- Performance Mesh with Dri-Power® moisture wicking fabric
- Full button
- Sleeveless
- Curved hemmed bottom with extended tail
- 4 Side sew label lower left front
- "R RUSSELL" center back neck

Options:

1/8" Braid around neck/down front	\$12.00
1/2" Braid around neck/down front	\$13.00
1/8" Braid around armholes	\$8.00
1/2" Braid around armholes	\$9.00
1/2" Braid around neck edge	\$10.00

Decoration Type:

Screen Print/Embroidery/Twill

Decoration Placements:

3, 6, 6L, 7, 8, 9, 10, 11, N4, BN
 Screen Print not available on placement 7

Notes:

10% Up charge for oversize 3XL

COLORS



COLORS



PRODUCT



Youth Button Front Baseball Game Jersey

334RHBK – RH Cloth **\$26.00**
 -100% Polyester Stretch Double Knit
 (Heavyweight Rod Knit)

Youth Sizes: S-XL

- Full button front
- Raglan sleeves
- Curved hemmed bottom with extended tail
- 4 Side sew label lower left front
- "R RUSSELL" center back neck

Options:

1/8" Braid around neck/down front	\$12.00
1/2" Braid around neck/down front	\$13.00
1/8" Braid 1" up from sleeve ends	\$8.00
1/2" Braid 1" up from sleeve ends	\$9.00
1/2" Braid on sleeve end	\$9.00
1" Braid on sleeve ends	\$5.00
1/2" Braid around neck edge	\$5.00

Decoration Type:

Screen Print/Embroidery/Twill

Decoration Placements:

1, 3, 6, 6L, 7, 8, 9, 10, 11, 32, 35, BN
 Screen Print not available on placement #7

NOTES:

Pant Hook-Up 234RHBK (Boot Cut), 235RHBK

PRODUCT



Youth Full Button Front Sleeveless Jersey

335RHBK - RH Cloth **\$22.00**
 -100% Polyester Stretch Double Knit (Heavyweight Rod Knit)

Sizes: S-XL

- Full button front sleeveless jersey
- Curved hemmed bottom with extended tail
- 4 Side sew label lower left front
- "R RUSSELL" center back neck

Options:

1/8" Braid around neck and down front	\$12.00
1/2" Braid around neck and down front	\$13.00
1/8" Braid around armholes	\$8.00
1/2" Braid around armholes	\$9.00
1/2" Braid on neck edge	\$10.00

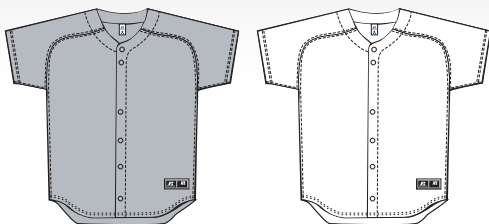
Decoration Type:

Screen Print/Embroidery/Twill

Decoration Placements:

3, 6, 6L, 7, 8, 9, 10, 11, BN
 Screen Print not available on placement #7

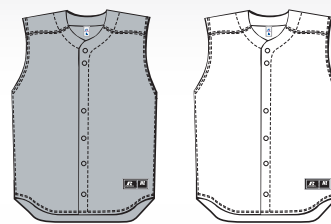
COLORS



BG7
Baseball Grey

WHI
White

COLORS



BG7
Baseball Grey

WHI
White

PRODUCT

NEW



Performance Two Button Placket Jersey

313QCMK - QC Cloth \$25.00
 313QCBK - QC Cloth (Youth) \$22.00
 -100% Polyester texture with drape and mechanical stretch

Adult Sizes: S-XXL Oversize: 3XL Youth Sizes: S-XL

- Two button placket jersey with raglan sleeves
- Self-material knit collar with contrasting neck and sleeve panels
- 1/8" Contrast piping around neck placket and sleeve end
- Curved hemmed bottom
- 4 Side sew label lower left front
- "R RUSSELL" center back neck

Decoration Type:
 Screen Print/Embroidery/Twill

Decoration Placements:
 1, 3, 6, 6L, 7, 8, 9, 10, 11, 32, 35, BN

Notes:
 Low bleed ink recommended
 10% up charge for 3XL

PRODUCT



Performance Mesh Placket Jersey

311DPMK - DP Cloth \$25.00
 311DPBK - DP Cloth (Youth) \$22.00
 -100% Polyester Flat back Mesh

Adult Sizes: M-XXL Oversize: 3XL Youth Sizes: S-XL

- Two button placket jersey with raglan sleeves
- Self-material knit collar with contrasting side and under sleeve panels
- 1/8" Contrast start and stop piping at front and back raglan seams
- Curved hemmed bottom
- 4 Side sew label lower left front
- "R RUSSELL" center back neck

Decoration Type:
 Screen Print/Embroidery/Twill

Decoration Placements:
 1, 3, 6, 6L, 7, 8, 9, 10, 11, 32, 35, BN

Notes:
 Low bleed ink recommended
 10% up charge for 3XL

COLORS



COLORS



PRODUCT



Two Button Placket Jersey

25420MK - 30 Cloth- NuBlend™ **\$13.20**
95420BK - 30 cloth NuBlend™ **\$11.60**
 -50% Polyester/50% Cotton

Sizes: Adult: S-XXL Oversize: 3XL
 Youth XS-L

- Round neck rib knit collar
- Two button placket
- Set-in sleeves
- Straight hemmed bottom
- "R RUSSELL" right sleeve

Decoration Type:
 Screen Print/Embroidery

Decoration Placements:
 1, 3, 6, 6L, 7, 8, 9, 10, 11, 32, 35, BN

Notes:
 NuBlend™ No Pill Fabric
 Low bleed ink recommended
 10% upcharge for 3XL

PRODUCT



Premium Game Pant

33147M0 - 47 Cloth **\$61.00**
33147BK - 47 Cloth (Youth) **\$50.00**
 - 100% Nylon Stretch Double Knit

Adult Sizes: 28-42 Oversize: 44 Youth Sizes: S-XL

- 2 1/2" deluxe elastic waistband with silicone gripper, 4 front belt loops, 3 tunnels
- Two snap closure with brass zipper and two set-in back pockets
- Double stitched crotch and double knees
- Cover seamed back rise, side and inseams
- Elastic leg hem
- Adult Standard inseam: Size 28-28", sizes 30-44 - 30"
- Youth Standard inseam: Size S-25", M-26", L-27", XL-28"
- "R RUSSELL" back left hip

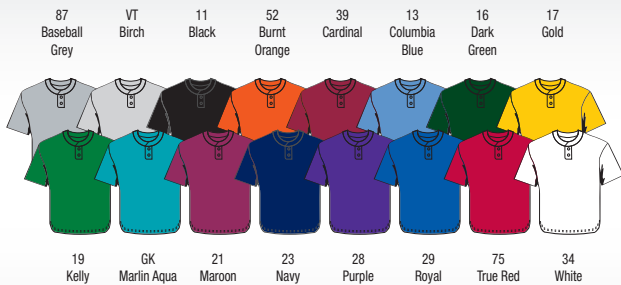
Options:
 1/8" Braid down sides \$6.00
 1/2" Braid down sides \$10.00
 1" Braid down sides \$12.00

Decoration Type:
 Not available

Decoration Placements:
 Not available

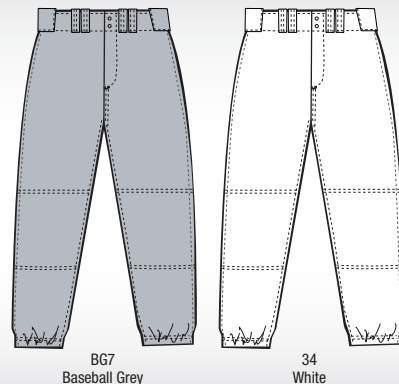
Notes:
 Stock Pant versions 33347MK - Relax fit
 Stock Jersey Hook-ups 34047MK
 10% upcharge for 44"

COLORS



25420MK - Inventory Only VT, 52, 39, 19, GK, 21, 75
95420MK - Inventory Only 87, VT, 52, 17, 19, GK, 21, 75

COLORS



PRODUCT



Deluxe Relaxed Fit Pant

33347MK – 47 Cloth **\$81.00**
 -100% Nylon Stretch Double Knit

Sizes: 28-42 Oversize: 44-48

- 2 1/2" deluxe elastic waistband with silicone gripper, 4 front belt loops, 3 tunnels • Two snap closure with brass zipper and two set-in buttoned back pockets
- Full fit through hips, thigh and calf area
- Double stitched crotch and double knees
- Coverseamed back rise, side and inseams
- Standard inseam: 35" un-hemmed (Inseam must be specified: 26"-34")
- Price includes the cost to hem length
- "R RUSSELL" back left hip

Options:	
1/8" Braid down sides	\$6.00
1/2" Braid down sides	\$10.00
1" Braid down sides	\$12.00
Hemmed leg end	N/C
Hemmed leg bottom with elastic	\$8.00

NOTES:	
Fuller cut pant	
Custom Pant version 33347CP	
10% Upcharge for oversize 44-48	

PRODUCT



Youth Engineered Pinstripe Game Pant

235ENBK – EN Cloth **\$26.00**
 100% Polyester Engineered Pinstripe Warp Knit

Youth Sizes: S-XL

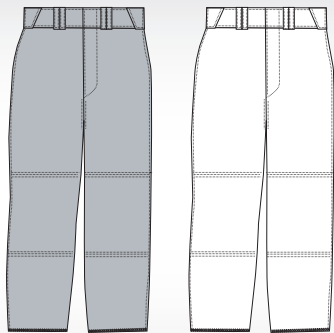
- Knitted-in zig-zag pinstripe
- 2" deluxe elastic waistband
- 4 front belt loops, single belt loops centered over set-in back pockets and 3 tunnels
- Concealed two snap closure with brass zipper
- Two set-in back pockets
- Double stitched crotch
- Coverseamed back rise and side seams
- Double knees
- Elastic leg hem
- Cover seamed
- Standard Inseam: Size S-25", M-26", L-27", XL-28"
- "R RUSSELL" back left hip

Options:	
1/8" Braid down sides	\$6.00
1/2" Braid down sides	\$5.00
1" Braid down sides	\$12.00

Decoration Type:
Not available

Decoration Placements:
Not available

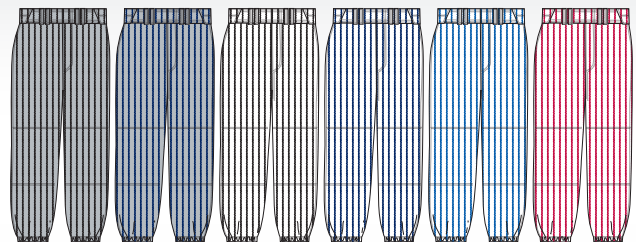
COLORS



BG7
Baseball Grey

WHI
White

COLORS



GBZ
Baseball Grey/
Black

GNZ
Baseball
Grey/
Navy

WBZ
White/Black

WNZ
White/Navy

WRZ
White/Royal

WZZ
White/True
Red

PRODUCT



Rod Knit Boot Cut Game Pant

234RHMK – RH Cloth **\$34.00**
234RHBK – RH Cloth (Youth) **\$28.00**
 100% Polyester Stretch Double Knit (Heavyweight Rod Knit)

Adult Sizes: S-XXL Youth Sizes: S-XL

- 2 ½" deluxe elastic waistband with 4 front belt loops, single belt loops centered over 2 set-in back pockets and 3 tunnels
- Concealed two snap closure with brass zipper
- Double stitched crotch and double knees
- Coverseamed back rise and side seams
- Hemmed boot cut
- Adult Standard Inseam: Size S-30", M-31", L-32", XL-33", XXL-34"
- Youth Standard Inseam: Size S-27", M-28", L-29", XL-30"
- "R RUSSELL" back left hip

Options:

1/8" Braid down sides	\$6.00
1/2" Braid down sides	\$10.00
1" Braid down sides	\$12.00

Notes:

Boot Cut

PRODUCT



Rod Knit Game Pant

235RHMK – RH Cloth **\$32.00**
235RHBK – RH Cloth (Youth) **\$26.00**
 -100% Polyester Stretch Double Knit (Heavyweight Rod Knit)

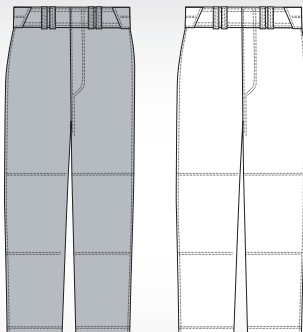
Adult Sizes: S-XXL Youth Sizes: S-XL

- 2 ½" deluxe elastic waistband with 4 front belt loops, single belt loops centered over 2 set-in back pockets and 3 tunnels
- Concealed two snap closure with brass zipper
- Double stitched crotch and double knees
- Coverseamed back rise and side seams
- Elastic leg hem
- Adult Standard Inseam: Size S-28", M-29", L-30", XL-31", XXL-32"
- Youth Standard Inseam: Size S-25", M-26", L-27", XL-28"
- "R RUSSELL" back left hip

Options:

1/8" Braid down sides	\$6.00
1/2" Braid down sides	\$10.00
1" Braid down sides	\$12.00

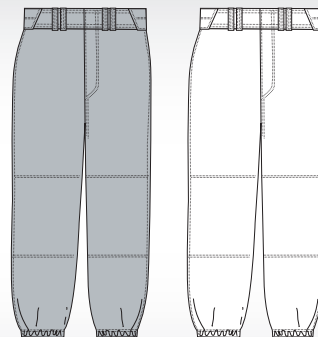
COLORS



BG7
Baseball Grey

WHI
White

COLORS



BG7
Baseball Grey

WHI
White

PRODUCT



Adult Game Pant With Piping

236DBMP – DB Cloth **\$22.00**
 236DBBP – DB Cloth - Youth **\$20.00**
 100% Polyester Double Knit

Adult Sizes: S-XXL Youth Sizes: XS-XL

- 2 1/2" deluxe elastic waistband with one set-in back pocket
- 2 front belt loops and 3 tunnels
- Two snap closure with brass zipper
- Double stitched crotch and double knees
- Cover seamed back rise
- Elastic leg hem
- 1/8" Piping down side seams
- Adult Standard Inseam: Size S-28", M-29", L-30", XL-31", XXL-32"
- Youth Standard Inseam: Size XS-24", S-25", M-26", L-27", XL-28"
- "R RUSSELL" back left hip

Options:
 Not available

PRODUCT



Baseball Game Pant

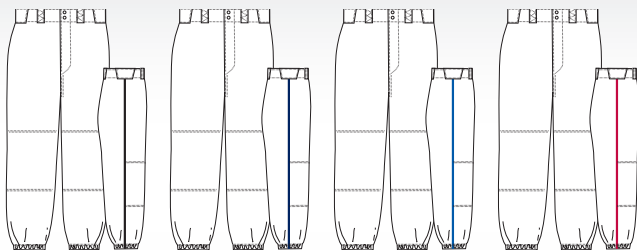
236DBMK – DB Cloth **\$20.00**
 236DBBK - DB Cloth - Youth **\$18.00**
 100% Polyester Double Knit

Adult Sizes: S-XXL
 Youth Sizes: XS-XL

- 2 1/2" deluxe elastic waistband with one set-in back pocket
- 2 front belt loops and 3 tunnels
- Two snap closure with brass zipper
- Double stitched crotch and double knees
- Coverseamed back rise
- Elastic leg hem
- Adult Standard Inseam: Size S-28", M-29", L-30", XL-31", XXL-32"
- Youth Standard Inseam: Size XS-24", S-25", M-26", L-27", XL-28"
- "R RUSSELL" back left hip

Options:
 1/8" Braid down sides **\$6.00**
 1/2" Braid down sides **\$10.00**
 1" Braid down sides **\$12.00**

COLORS



WBK White/Black WNA White/Navy WRO White/Royal WTR White/True Red

COLORS



BG7 Baseball Grey BLK Black NAV Navy WHI White

PRODUCT



Youth Pull On Pant

237DBBK- DB Cloth **\$10.50**
 100% Polyester Double Knit

Youth Size: XS-XL Oversize: XXL

- Multi-needle elastic waist with drawcord
- One set-in back pocket
- Double knees
- Elastic leg hem
- Standard Inseam – 18 1/4"
- "R RUSSELL" back left hip

Options:
 Not available

Notes:
 Adult version not available
 10% upcharge for XXL

PRODUCT

Dri-POWER®
Stretch-POWER®

**Price
 Reduced**



**Performance Short Sleeve Batting
 Practice Pullover**

896LPMK - LP Cloth **\$50.00**
 -85% Nylon/15% Spandex - Colors, White

Sizes: S-XXL Oversize: 3XL

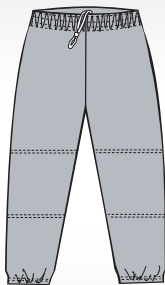
- Stretch Woven Rip-Stop
- Dri-Power® moisture wicking fabric
- Dri-Power® four side sew label
- Ventilator Technology
- 4-way lightweight stretch fabric for enhanced movement
- Full cut body with quarter zip neck
- Contrast 1/8" piping and self-material front/back inserts
- Waist has shock cord with cord lock on wearers left
- "R RUSSELL" center back neck

Decoration Type: Screen Print/Embroidery/Twill

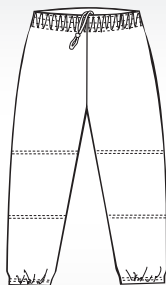
Decoration Placements: 1, 3, 6, 6L, 7, 7C, 8, 9, 10, 11, 32, 35, 36

Notes:
 Breathable stretch shell
LAST SEASON AVAILABLE

COLORS



BG7
 Baseball Grey



WH1
 White

COLORS

BWH
 Black/
 White

CWH
 Cardinal/
 White

DWI
 Dark Green/
 White

MWH
 Maroon/
 White

NWH
 Navy/
 White



PWH
 Purple/
 White

ROW
 Royal/
 White

TRW
 True Red/
 White

PRODUCT



Logo on back neck



Dri-POWER®
Stretch-POWER®

Price Reduced

Performance Long Sleeve Batting Practice Pullover

898LPMK - LP Cloth \$60.00

-85% Nylon/15% Spandex - Colors

Sizes: S-XXL Oversize: 3XL

- Stretch Woven Rip-Stop
- Dri-Power® moisture wicking fabric
- Dri-Power® four side sew label with Ventilator Technology
- 4-way lightweight stretch fabric for enhanced movement
- Full cut body
- Quarter zip neck
- Contrast 1/8" piping and self-material back neck
- Waist has shock cord with cord lock on wearers left
- "R RUSSELL" center back neck

Decoration Type: Screen Print/Embroidery/Twill

Decoration Placements: 1, 3, 6, 6L, 7, 7C, 8, 9, 10, 11, 32, 35, 36

Notes:

Breathable stretch shell

LAST SEASON AVAILABLE

PRODUCT



Pullover Crew

811MEMK – ME Cloth \$40.00

-100% Polyester Micro Polar Fleece

Adult Sizes: S-XXL Oversize: 3XL-4XL

- Athletic cut pullover crew
- Raglan sleeves
- 1/8" Contrast start and stop piping at front and back raglan seams
- Contrasting side panels
- Stretch binding at neck, cuff and bottom band
- Curved hemmed bottom
- "R RUSSELL" Center back neck

Decoration Type: Embroidery/Twill

Decoration Placements: 6, 7, 7C, 8, 9, 9C, 9N, BN

COLORS



COLORS



PRODUCT



Baseball Jacket

814LRMK – LR Cloth **\$75.00**
 -100% Texturized Nylon Polyester Fill Lining

Sizes: S-XXL Oversize: 3XL

- Water resistant
- Full snap front (covered metal snaps)
- Polyester fill diamond quilted lining
- Raglan sleeves
- 1/8" Contrast start and stop piping at front and back raglan seams
- Contrasting side panels
- Solid rib knit collar, cuff and bottom band
- Single welt front pockets
- "R RUSSELL" Center back neck

Options:

Not available

Decoration Type:

Embroidery/Twill

Decoration Placements:

3, 6, 7, 8, 9, 10, BN

PRODUCT



Adjustable Baseball Belt

BBBELTA (Adult) **\$6.50**
BBBELTY (Youth) **\$6.50**

Sizes: OSFA; Adjustable 32"-46" (Adult)
 Sizes: OSFA; Adjustable 18"-32" (Youth)

- 1 1/2" Wide elastic belt
- Metal adjustable slide
- Metal buckle
- Coated split leather tab
- "R RUSSELL" embossed on tab

Notes:

Replaces the BBBELT0
 Reduced width for a better fit on youth baseball pants

COLORS



COLORS



"R" Russell logo color is tonal

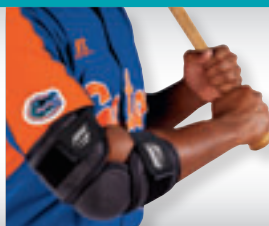


BIKE® Adult/Youth Hard Shell Batting Glove

BABG90 - Adult \$40.00
 BYBG90 - Youth \$40.00

SIZES: Adult (S-XXL); Youth (S-L)
 COLOR CODE: BLK

- Providing baseball players protection after an injury to top of hand or knuckles.
- 40% Premium Goatskin Leather Palm
- 45% PU plastic covering for protection of knuckles
- 9% Synthetic rubber added padding for top of Hand
- 6% Polyester spandex fabric used between fingers for flexibility
- Opposite closure for better secured fit



BIKE® Adult/Youth Batter's Elbow Guard

Adult Batter's Elbow:
 BABE50R - Adult (Left-Handed Batter) \$25.00
 BABE50L - Adult (Right-Handed batter) \$25.00

Youth Batter's Elbow:
 BYBE50R - Youth (Left-Handed Batter) \$25.00
 BYBE50L - Youth (Right-Handed Batter) \$25.00

SIZES: Adult (NS); Teen (NS)
 COLOR CODE: BLK

- Protection of the elbow from impact of fastball
- Adult : 10" and Youth 9" over-all length
- Three segmented pads allows for flexibility of the elbow; two elastic strap closures
- Outer covering: 90% nylon; 10% polyester
- Backing: 100% polyester covers PE plastic and foam



BIKE Adult Batter's Leg Guard

BALG50 - Adult \$21.00

SIZES: Adult (NS)
 COLOR CODE: BLK

- For use for protection against foul balls off leg
- Segmented hard shell PVC inserts with foam
- Length 12" with toe cap attached
- Removable toe cap
- Two elastic straps with D-ring attachments



BIKE® Layered Padded Sliding Short

BASL35 - Adult \$22.00
 BYSL35 - Youth \$20.00
 Retail Packaging: (In Clamshell with Cup in pouch)
 BASL35R - Adult \$26.50
 BYSL35R - Youth \$25.50

SIZES: Adult (S-XXL); Youth (S-XL)
 COLOR CODE: WHI

- 86% Nylon; 14% Spandex
- Sliding short with cup pocket for abrasion and strawberry protection
- Dual layered fabric on side panels for additional protection against strawberries or abrasions
- Cup pocket made in moisture management fabric
- 1-1/2" Elastic waistband
- Mid-thigh length



BIKE® Padded Sliding Short with Cup Holder

BASL75 - Adult \$30.50
 BYSL75 - Youth \$30.50
 Retail Packaging: (On hangar with Cup in pouch)
 BASL75C - Adult \$35.00
 BYSL75C - Youth \$32.50

SIZES: Adult (S-XXL); Youth (S-XL)
 COLOR CODE: WHI

- 86% Nylon; 14% Spandex
- Sliding short with cup pocket for abrasion and strawberry protection
- Moisture wicking, breathable spacer fabric and mesh fabric in key areas for ventilation
- 1-1/2" Plush waistband with jock tag
- Mid-thigh length

SIZES

ADULT GLOVE SIZING	S	M	L	XL	XXL
BABG90, BABG50	6-7"	8-9"	10-11"	12-13"	14-15"

YOUTH GLOVE SIZING	S	M	L
BYBG90, RYBG50	3-4"	4-5"	6-7"

	S	M	L	XL	XXL
BASL35, BASL35R, BASL75, BASL75C	28-30"	32-34"	36-38"	40-42"	44-46"
BYSL35, BYSL35R, BYSL75, BYSL75C	22-24"	26-38"	30-32"	34-36"	



ADVANCED ATHLETIC PROTECTION™

XTREME MOTION™

PATENT PENDING



IMPACT FORCE

MOTION



MAXIMUM MOTION



VENTILATION



LIGHTWEIGHT MATERIAL

INNOVATIVE MATERIAL

:: Made from lightweight 100% EVA providing ample support and protection for the athlete all the while allowing enough flexibility for maximum mobility while playing almost any sport.

TARGETED FOR:

:: Primarily targeted to infielders and outfielders, wrestlers and other athletes who may need protection from injury but needing complete freedom of motion.

KEY BENEFITS:

- :: Vents allow air to easily flow in and out to keep the athlete cool
- :: The innovative flexible, one-piece EVA material provides the perfect combination of comfort and protection for the athlete, while allowing maximum mobility during any athletic activity.
- :: Lighter in weight than standard plastic cup

XTREME MOTION.

BIKE XTREME MOTION™ PROTECTIVE CUP

BACU05 - Adult \$10.00

SIZES: Adult (NS)
COLOR CODE: GRY

- Provides moderate protection
- Made of one component that provides both firmness and flexibility
- Excellent for infielders, wrestlers, lacrosse... etc.
- Lighter for better comfort and mobility
- More ventilation than standard cups
- Fits all BIKE® garments requiring a cup
- Patent pending





ADVANCED ATHLETIC PROTECTION™



HIGHEST PROTECTION

:: The wave shape of the cup was structurally engineered to prevent cracking, while providing the ultimate in ventilation.

BEST PERFORMANCE

:: Kinetic properties of the wave design allow the soft TPE to move with the body, and allow you to perform at your peak.

DESIGNED TO:

:: Align perfectly with the athlete's body creating the most protection while providing maximum comfort to allow athletes to perform at their peak.

KEY BENEFITS:

- :: Increases ventilation
- :: Anti-microbial finish to fight odor
- :: Soft edges for mobility

BIKE® PRO-EDITION™ CUP

BACU01 - Adult	\$8.00
BTCU01 - Teen	\$7.00
BYCU01 - Youth	\$7.00
BPCU01 - Pee Wee	\$7.00

SIZES: Adult (NS); Teen (NS); Youth (NS); Tee Ball (NS)
COLOR CODE: BLK (Adult); ROY (Teen); SCL (Youth); GRN (Pee Wee)

- Protection for athletes in high impact sports.
- 100% increased ventilation
- Anti-microbial finish to fight odor
- Soft edges for maximum mobility
- Fits all BIKE® garments requiring a cup
- Color coded by size



BIKE Performance Elite™

BOXER SUPPORTER



STABILITY ANCHOR

:: Revolutionary non-stretch stability anchor allows for the flexibility of a boxer or brief with the performance of a strap.

STRAP SUPPORTER



**WICKS
MOISTURE**



**FIGHTS
ODOR**

MAXIMUM PERFORMANCE FOR YOUR ATHLETIC NEEDS

:: The Bike Performance Elite™ collection of athletic supporters and combo packs provides the ultimate in performance protection for the everyday or serious athlete. The polyester microfiber body fabric is designed to wick moisture away from the skin to keep the athlete drier and cooler.

FIGHT BODY ODOR

:: The Bike Performance Elite™ collection of athletic supporters and combo packs also have an antimicrobial treatment to help reduce odor.

KEY BENEFITS:

:: Complete moisture management solution keeps the athlete drier and cooler during any athletic activity
 :: Anti-microbial finish to fight odor



BIKE PERFORMANCE ELITE™ BOXER INCLUDES CUP POCKET

Without Cup:
BACP31 - Adult **\$20.00**

SIZES: Adult (S-XL);
COLOR CODE: GRY

- Moisture wicking
- Anti-microbial finish to fight odor
- Dri-Power® moisture management fabric cup pouch
- 1½" push waistband with jock tag
- CUP NOT INCLUDED



BIKE PERFORMANCE ELITE™ CUP STRAP ONLY

Without Cup:
BACP11 - Adult **\$9.50**

SIZES: Adult (S-XXL)
COLOR CODE: GRY

- Moisture wicking
- Antimicrobial finish to fight odor
- Dri-Power® moisture management fabric cup pouch
- 2" push waistband with jock tag; ¾" Leg straps



**BIKE PERFORMANCE COTTON™
BOXER INCLUDES CUP POCKET**

New! Without Cup: (Available Date 11/15/10)
BACP37 – Adult \$18.00
BTCP37 – Teen \$18.00
BYCP37 – Youth \$18.00

SIZES: Adult (S-XL); Teen (M-L); Youth (S)
COLOR CODE: WHI

- Protection for athletes in high impact sports
- 95% Cotton; 5% Spandex; Pouch exterior 100% Polyester; Interior: 100% Polyester Dri-Power®
- Dri-Power® moisture wicking fabric cup pouch
- 1½" Standard waistband with content jock tag
- Proflex max cups



**BIKE PERFORMANCE COTTON™ BRIEF
COMBO-INCLUDES CUP**

With PRO-EDITION™ Cup:
BYCO27- Youth \$16.00
BPCO27- Pee Wee \$16.00

SIZES: Youth- (S) , Pee Wee- (XS)

COLOR CODE: WHI

- Protection for athletes in high impact sports
- 95% Cotton; 5% Spandex; Pouch exterior: 100% Polyester; Interior 100% Polyester Dri-Power®
- Dri-Power® moisture wicking fabric cup pouch
- 1-12" standard waistband with content jock tag



**BIKE® PERFORMANCE COTTON™
CUP STRAP - INCLUDES CUP POCKET**

New! Without Cup: (Available Nov. 15, 2010)
BACP17- Adult \$7.50
BTCP17 - Teen \$7.50
BYCP17- Youth \$7.50

SIZES: Adult (S-XXL); Teen (M-L); Youth (S)
COLOR CODE: WHI

- Protection in high impact sports
- Exterior pouch: 100% Polyester; Interior pouch side 100% polyester Dri-Power® moisture wicking fabric
- 2" standard elastic waistband with content jock tag
- 3/4" leg straps
- CUP NOT INCLUDED



**BIKE PERFORMANCE COTTON™
STRAP SUPPORTER**

BASP17 - Adult - 1 unit Pack \$5.00
BTSP17 - Teen - 1 unit Pack
BYSP17 - Youth - 1 unit Pack

BASP17B - Adult - 2 unit Pack \$9.50
BTSP17B - Teen - 2 unit Pack
BYSP17B - Youth- 2 unit Pack

BADZ17 - Adult - School Pack (Dz.) \$54.00

SIZES: Adult (S-XXL) 3XL in BADZ17 School Pack only;
 Teen (M-L); Youth (S)

COLOR CODE: BLK, WHI (Adult); WHI only (Teen/Youth)

- Athletic supporters are designed to help: support, protect, fight fatigue and reduces risk of strains
- Performance support with the feel of cotton
- Pouch: 55% Nylon; 25% Rubber; 20% Cotton
- 2" standard elastic waistband with fabric content label
- 3/4" Leg strap
- Supporter pouch-**NOT A CUP POUCH**



**BIKE PERFORMANCE COTTON™
#10 STRAP SUPPORTER**

BASP10 - Adult – Individual Pack \$6.50

SIZES: Adult (S-XXL)

COLOR CODE: WHI

- Athletic supporters are designed to help: support, protect, fight fatigue and reduces risk of strains
- Performance support with the feel of cotton
- Pouch: 55% Nylon; 25% Rubber; 20% Cotton
- 3" standard elastic waistband with fabric content label
- 3/4" leg strap
- Supporter pouch-**NOT A CUP POUCH**

SIZES

	XS	S	M	L	XL	XXL
ADULT		28-30"	32-34"	36-38"	40-42"	44-46"
TEEN			26-28"	30-32"		
YOUTH		22-24"				
TEE BALL	18-20"					

	S	M	L	XL	XXL	3XL
ADULT	28-30"	32-34"	36-38"	40-42"	44-46"	48-50"
TEEN		26-28"	30-32"			
YOUTH	22-24"					



TF-PRO

- Premium full grain leather
 - 85% gray and white wool windings
 - Cushion cork center
 - Spalding raised seam for improved grip*
 - Item# 41-000
- SWAC TF-PRO**
- Item# 41-000SW
- TF PRO Flat Seam**
- Item# 41-00FS



LITTLE LEAGUE

- Leather cover
 - Composite cork and rubber center
 - Official size and weight
 - Item# 41-004
- USSSA**
- Item# 41-004US
- BPA**
- Item# 41-004BP



TF 500

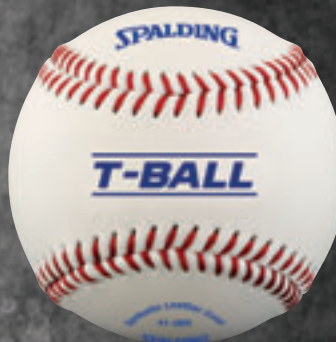
- Premium full grain leather
- Gray wool windings
- Cushion cork center
- Spalding raised seam for improved grip*
- Item# 41-001



OFFICIAL LEAGUE

- Synthetic leather cover
- Composite cork and rubber center
- Official size and weight
- Item# 41-003

NFHS®



OFFICIAL T-BALL

- Indoor/Outdoor T-Ball
- Synthetic leather cover
- Sponge rubber center
- Official size and weight
- Item# 41-005



TF LITTLE LEAGUE

- Full grain leather cover
 - Gray wool windings
 - Cushion cork center
 - Spalding raised seam for improved grip*
 - Item# 41-002
- TF-USSSA**
- Item# 41-002US
- TF-BPA**
- Item# 41-002BP



TF 100

- Leather cover
- Flat seams
- Cushion cork
- Item# 41-006FS

*Spalding raised seam is 30% higher than traditional flat seam ball