



*Jennie Finch*  
# 27 USA

Jennie Finch

ASA Female Athlete of the Year  
Two-Time Olympic Medalist

**DUDLEY**  
2011 Softball catalog

**NEW FOR 2011**



**DUDLEY®**

ASA	2-3
USSSA	4
NSA	5

<b>institutional</b>	
COLLEGIATE	6
HIGH-SCHOOL	6
LITTLE LEAGUE	6
NON-ASSOCIATION	7

<b>equipment</b>	
BAGS	8
TROPHY BALLS	8
HATS & VISORS	8
JENNIE FINCH SERIES	9

**thunder hycon**

This softball is not nearly as susceptible to compression changes under increased temperature (100°F) and decreased temperature (40°F) compared to .40, .44 and .47 poly core softballs. This translates into a much more uniform and consistent compression ball from Spring play thru late Summer.

Low compression ball limits bat damage compared to higher compression balls.

The softer/lower compression ball reduces the risk of injuries compared to the harder poly core softballs.

The higher COR/lower compression ball equalizes bat performance.

**4 USSSA thunder hycon**

Item# 4U-066Y and 4U-067Y

**5 NSA thunder hycon**

Item# 4E-066Y and 4E-067Y

**7 non-association thunder hycon**

Item# 43-066Y and 43-067Y

**CORE TECHNOLOGY**

Multi-Layer



- POLYURETHANE INNER CENTER/CORE**
- Precision blended crosslinked polyurethane system
  - High density and maximum resiliency urethane outer core layer
  - Improves ball durability
  - Reduces bat damage & reduces bat vibration "sting" on contact
  - Gives ball a great feel

- COVER MATERIAL**
- Provides good feel and aesthetic appeal
  - Composite ZN

Polyurethane (POLY)



- POLYURETHANE CENTER**
- Precision blended crosslinked polyurethane system
  - High density and maximum resiliency

- COVER MATERIAL**
- Provides good feel and aesthetic appeal
  - Available in leather, composite or synthetic leather

CORK



- CORK CENTER**
- Premium granulated cork
  - Urethane binder system
  - Compression molded and heat fused

- COVER MATERIAL**
- Provides good feel and Aesthetic appeal
  - Available in leather or synthetic leather



## poly center

### THUNDER HEAT<sup>™</sup> FAST PITCH

Item# 4A-147Y • Cover: Leather • Size: 12"  
COR: .47 • Compression: 375 lbs. (Shown)

Item# 4A-531 • Cover: Leather • Size: 11"  
COR: .47 • Compression: 375 lbs.

Item# 4A-132Y • Cover: Composite • Size: 12"  
COR: .47 • Compression: 375 lbs.

### SLOW PITCH

Item# 4A-131L • Cover: Leather • Size: 12"  
COR: .44 • Compression: 375 lbs.

Item# 4Y-222N • Cover: Synthetic • Size: 12"  
COR: .44 • Compression: 375 lbs.

Item# 4A-244Y • Cover: Synthetic • Size: 12"  
COR: .40 • Compression: 375 lbs.

Item# 4A-541Y • Cover: Leather • Size: 11"  
COR: .44 • Compression: 375 lbs.

Item# 4A-133Y • Cover: Composite • Size: 12"  
COR: .44 • Compression: 375 lbs.

Item# 4A-135Y • Cover: Leather • Size: 12"  
COR: .40 • Compression: 375 lbs.

Item# 4A-728Y • Cover: Synthetic • Size: 11"  
COR: .44 • Compression: 375 lbs.

### THUNDER SY<sup>™</sup> FAST PITCH

Item# 4A-913Y • Cover: Synthetic • Size: 12"  
COR: .47 • Compression: 375 lbs.

### SLOW PITCH

Item# 4A-841Y • Cover: Synthetic • Size: 12"  
COR: .40 • Compression: 375 lbs.

Item# 4A-921N • Cover: Synthetic • Size: 12"  
COR: .44 • Compression: 375 lbs. (Shown)

Item# 4A-722N • Cover: Synthetic • Size: 11"  
COR: .44 • Compression: 375 lbs.

### THUNDER ZN<sup>™</sup> SLOW PITCH

Item# 4A-136Y • Cover: Composite • Size: 12"  
COR: .44 • Compression: 375 lbs. (Shown)



## CORK center

### SB 12L<sup>™</sup> FAST PITCH

Item# 4A-311Y • Cover: Leather • Size: 12"  
COR: .47 • Compression: 375 lbs.  
Black Print & Stitching

### SLOW PITCH

Item# 4A-137Y • Cover: Leather • Size: 12"  
COR: .44 • Compression: 375 lbs.  
Red Print & Stitching (Shown)

### SB 12T<sup>™</sup>

Item# 4A-729Y • Cover: Synthetic • Size: 12"  
COR: .44 • Compression: 375 lbs.  
Red Print & Stitching

### SBC FAST PITCH

Item# 4Y-611 • Cover: Leather • Size: 11"  
COR: .47 • Compression: 375 lbs. (Shown)

### SLOW PITCH

Item# 4A-139Y • Cover: Leather • Size: 11"  
COR: .44 • Compression: 375 lbs.

## CITY BALL

### KAPOK CENTER<sup>®</sup> SLOW PITCH

Item# 4A-377 • Cover: Leather • Size: 12"  
COR: .47 • Compression: 375 lbs.





# MULTI-LAYER

\*while supplies last

## THUNDER ADVANCE

SLOW PITCH CLASSIC M STAMP

Item# 4U-539Y\* • Cover: Composite • Size: 12"  
COR: .40 • Compression: 325 lbs. (Shown)

SLOW PITCH STADIUM STAMP

Item# 4U-532Y\* • Cover: Composite • Size: 12"  
COR: .47 • Compression: 450 lbs.



# poly center

## THUNDER HYCON

**New!**

SLOW PITCH CLASSIC PLUS STAMP

Item# 4U-066Y • Cover: Composite • Size: 12"  
COR: .52 • Compression: 300 lbs. (Shown)

Item# 4U-067Y • Cover: Synthetic • Size: 12"  
COR: .52 • Compression: 300 lbs.

## THUNDER HEAT

FAST PITCH

Item# 4U-147Y • Cover: Leather • Size: 12"  
COR: .47 • Compression: 375 lbs.

SLOW PITCH CLASSIC M STAMP

Item# 4U-551Y • Cover: Leather • Size: 12"  
COR: .40 • Compression: 325 lbs.

Item# 4U-552Y • Cover: Synthetic • Size: 12"  
COR: .40 • Compression: 325 lbs.

Item# 4U-549Y • Cover: Composite • Size: 12"  
COR: .40 • Compression: 325 lbs.

SLOW PITCH STADIUM STAMP

Item# 4U-535Y • Cover: Leather • Size: 12"  
COR: .47 • Compression: 450 lbs. (Shown)

Item# 4U-545Y • Cover: Synthetic • Size: 12"  
COR: .47 • Compression: 450 lbs.

Item# 4U-550Y • Cover: Composite • Size: 12"  
COR: .47 • Compression: 450 lbs.

SLOW PITCH CLASSIC W STAMP

Item# 4U-526Y • Cover: Leather • Size: 11"  
COR: .44 • Compression: 400 lbs.

Item# 4U-544Y • Cover: Synthetic • Size: 11"  
COR: .44 • Compression: 400 lbs.

## THUNDER ZN

SLOW PITCH CLASSIC M STAMP

Item# 4U-540Y • Cover: Composite • Size: 12"  
COR: .40 • Compression: 325 lbs.

STADIUM STAMP

Item# 4U-528Y • Cover: Composite • Size: 12"  
COR: .47 • Compression: 450 lbs. (Shown)

## THUNDER SY

SLOW PITCH CLASSIC M STAMP

Item# 4U-541Y • Cover: Synthetic • Size: 12"  
COR: .40 • Compression: 325 lbs.

SLOW PITCH STADIUM STAMP

Item# 4U-546Y • Cover: Synthetic • Size: 12"  
COR: .47 • Compression: 450 lbs.

SLOW PITCH CLASSIC W STAMP

Item# 4U-542Y • Cover: Synthetic • Size: 11"  
COR: .44 • Compression: 400 lbs. (Shown)

DUDLEY is the official Ball of the NSA/DUDLEY Men's super world series event



# MULTI-LAYER

\*while supplies last

## THUNDER ADVANCE

SLOW PITCH

Item# 4E-184Y • Cover: Composite • Size: 12"  
COR: .44 • Compression: 400 lbs. (Shown)



# poly center

## THUNDER HYCON

**New!**

SLOW PITCH

Item# 4E-066Y • Cover: Composite • Size: 12"  
COR: .52 • Compression: 275 lbs.

Item# 4E-067Y • Cover: Synthetic • Size: 12"  
COR: .52 • Compression: 275 lbs. (Shown)

## THUNDER HEAT

FAST PITCH

Item# 4E-111Y • Cover: Leather • Size: 12"  
COR: .47 • Compression: 400 lbs. (Shown)

Item# 4E-202Y • Cover: Synthetic • Size: 11"  
COR: .47 • Compression: 400 lbs.

Item# 4E-203Y • Cover: Synthetic • Size: 12"  
COR: .47 • Compression: 400 lbs.

Item# 4E-198Y • Cover: Composite • Size: 12"  
COR: .47 • Compression: 400 lbs.

SLOW PITCH

Item# 4E-702Y • Cover: Synthetic • Size: 11"  
COR: .44 • Compression: 400 lbs.

Item# 4E-501Y • Cover: Leather • Size: 11"  
COR: .44 • Compression: 400 lbs.

Item# 4E-161Y • Cover: Leather • Size: 12"  
COR: .44 • Compression: 400 lbs.

Item# 4E-199Y • Cover: Composite • Size: 12"  
COR: .44 • Compression: 400 lbs.

## THUNDER ZN

SLOW PITCH

Item# 4E-191Y • Cover: Composite • Size: 12"  
COR: .44 • Compression: 400 lbs.

## THUNDER SY

SLOW PITCH

Item# 4E-902Y • Cover: Synthetic • Size: 11"  
COR: .44 • Compression: 400 lbs. (Shown)

Item# 4E-824Y • Cover: Synthetic • Size: 12"  
COR: .44 • Compression: 400 lbs.

# USSSA

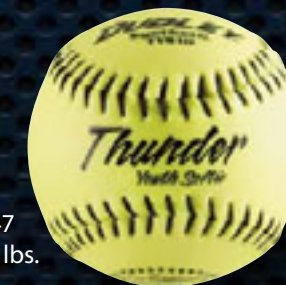
UNITED STATES SPECIALTY SPORTS ASSOCIATION

# NSA

NATIONAL SOFTBALL ASSOCIATION



THUNDER YOUTH SOFTIE SLOW PITCH  
Item# 4E-101Y  
Cover: Synthetic  
Size: 10" • COR: .47  
Compression: 25 lbs.



# COLLEGIATE

DUDLEY is the official Ball of the NJCAA CHAMPIONSHIPS



## THUNDER HEAT™ FAST PITCH

Item# 43-147Y • Cover: Leather • Size: 12" COR: .47 • Compression: 375 lbs.

Item# 4H-147Y • Cover: Leather • Size: 12" COR: .47 • Compression: 375 lbs.  
LOW-SEAM FAST PITCH SOFTBALL



## NJCAA THUNDER HEAT™ FAST PITCH

Item# 4N-143 • Cover: Leather • Size: 12" COR: .47 • Compression: 350 lbs. +/-50

# NON-ASSOCIATION



## multi-layer

### THUNDER ADVANCE SLOW PITCH

Item# 43-184Y • Cover: Composite • Size: 12" COR: .44 • Compression: 375 lbs.

**New!**



## poly center

### THUNDER HYCON SLOW PITCH

Item# 43-066Y • Cover: Composite • Size: 12" COR: .52 • Compression: 300 lbs.

**New!**

Item# 43-067Y • Cover: Synthetic • Size: 12" COR: .52 • Compression: 300 lbs. (Shown)

### THUNDER SY FAST PITCH

Item# 43-712Y • Cover: Synthetic • Size: 11" COR: .47 • Compression: 375 lbs.

### THUNDER ZN SLOW PITCH

Item# 43-055 • Cover: Composite • Size: 12" COR: .44 • Compression: 525 lbs.

## CORK center



### SB 12L SLOW PITCH

Item# 43-331 • Cover: Leather • Size: 12" COR: .47 • Compression: 375 lbs.

Item# 43-311 • Cover: Leather • Size: 12" COR: .47 • Compression: 375 lbs.  
Red Print & Stitching

poly center

poly center

# high school

22 State Adoptions More than any other Brand



## THUNDER HEAT™ FAST PITCH

Item# 43-147 • Cover: Leather • Size: 12" COR: .47 • Compression: 375 lbs.

**New!** Item# 43-065Y • Cover: Composite • Size: 12" COR: .47 • Compression: 375 lbs.



## SB 12L™ FAST PITCH

Item# 4H-311Y • Cover: Leather • Size: 12" COR: .47 • Compression: 375 lbs. (Shown)

Item# 4Y-321Y • Cover: Leather • Size: 12" COR: .47 • Compression: 375 lbs. • White stitching

POLY CENTER

CORK CENTER

# Little league

## SB 12L™ FAST PITCH

Item# 4L-311Y • Cover: Leather Size: 12" • COR: .47 Compression: 375 lbs. (Shown)

## SBC 11

Item# 4L-611Y • Cover: Leather Size: 11" • COR: .47 Compression: 375 lbs.



poly center

## SY 12 FAST PITCH

Item# 4L-915Y • Cover: Synthetic Size: 12" • COR: .47 Compression: 375 lbs.

## SY 11

Item# 4L-713Y • Cover: Synthetic Size: 11" • COR: .47 Compression: 375 lbs.

cork center



## practice balls

### INNOVA SLOW PITCH

Item# 43-422 • Cover: Synthetic • Size: 12"

### D-12 SOFTIE SLOW PITCH

Item# 4Y-994 (Shown) • Cover: Synthetic • Size: 12"

### D-11 SOFTIE

Item# 4Y-993 • Cover: Synthetic • Size: 11"

### BAG OF BALLS SLOW PITCH

Item# 43-419Y • Cover: Synthetic • Size: 12"



# trophy balls

## 21" TROPHY BALL

ALL HAVE SYNTHETIC COVERS

& A SIZE OF 21" (Not intended to be struck by a bat)

Item# 43-223 • Thunder ZN NSA stamp

Item# 43-224 • Thunder ZN ASA stamp

Item# 43-225 • Thunder Heat NFHS stamp (Shown)

Item# 43-226 • Thunder Heat NJCAA stamp

Item# 43-220 • Thunder ZN USSSA stamp

Item# 4F-115 • Jennie Finch Logo (Shown)



# Jennie FINCH SERIES

## poly center

RECREATIONAL  
FAST PITCH

Item# 4F-114 • Cover: Synthetic • Size: 12"  
COR: .47 • Compression: 375 lbs. • Color Pink

## training balls

SOFT TRAINING BALL  
FAST PITCH

Item# 4F-113 • Cover: Synthetic • Size: 11" (Shown)  
Raised Seams • Color: Yellow • Sponge Rubber Center

Item# 4F-116 • Cover: Synthetic • Size: 12"  
Raised Seams • Color: Yellow • Sponge Rubber Center

10" SOFTIE

Item# 4F-112 • Cover: Synthetic • Size: 10" (Shown)  
Black Stitching • Color: Pink • Sponge Rubber Center



- 2 Time Olympic Medalist
- 2 Time Honda Award recipient for softball, presented to the nation's best collegiate player

# EQUIPMENT



## PREMIUM EQUIPMENT BAG

Item# 68-442

- Combination of 600 & 720 durable Denier material
- Lined valuables pocket • Large bat compartment
- 5 various size storage pockets to organize your gear
- Water bottle compartment • 2 fence clip system
- Inline skate wheels



## PREMIUM BAT BAG

Item# 68-443

- Combination of 600 & 720 durable Denier material
- Lined valuables pocket • Shoe/Cleat pocket
- 2 large storage pockets
- Bat compartment on bottom designed for 2 bats
- 2 fence clip system



# HATS & VISORS



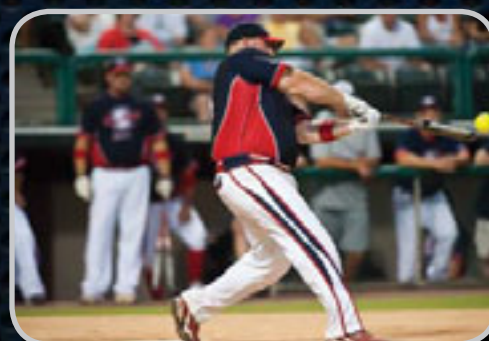
UNSTRUCTURED BLUE  
Item# 46-101

BLUE VISOR  
Item# 46-121



UNSTRUCTURED WHITE  
Item# 46-102

WHITE VISOR  
Item# 46-122



# **DUDLEY**<sup>®</sup>

[WWW.DUDLEYSPORTS.COM](http://WWW.DUDLEYSPORTS.COM)

**FOR MORE INFORMATION CONTACT YOUR LOCAL SPALDING REPRESENTATIVE OR CALL:**

**NORTHEAST**

**Ph: 1-888-606-5522**

**Fax: 1-877-729-4800**

**SOUTH**

**Ph: 1-888-606-5520**

**Fax: 1-877-729-4800**

**MIDWEST**

**Ph: 1-888-606-5523**

**Fax: 1-888-259-6554**

**WEST**

**Ph: 1-888-606-5524**

**Fax: 1-888-259-6554**

Little League Baseball, Little League, the medallion and the keystone are registered trademarks and service marks belonging exclusively to Little League Baseball, Incorporated. NFHS is a registered trademark of the National Federation of State High Schools. SB12L, SB12ST, DUDLEY, Thunder Advance and THUNDER HEAT are trademarks owned by Russell Brands, LLC or a Russell Corporation affiliate. All other trademarks are property of their respective owners. ©Russell Brands, LLC 2011